

Tulsa Winch

Playing It Safe: How Your Winch Impacts Your Bottom Line

In the oil fields of East Texas, Jimmy Frye doesn't have time for winches that don't live up to his expectations.

As he surveys the day's job site Frye takes mental notes, calculating the progress of his truck fleet as it hums along in a routine ballet: lifting, pulling, hauling and positioning oil field equipment that often weighs tons. Frye's winch trucks play a critical role in meeting this project's deadline. The last thing he needs is an on-the-job injury or catastrophic equipment failure that can cost him big.

Like many fleet owners, Frye expects exceptional winch performance in the field. Period. The success of this job—and every job—hinges on his reputation for safe, on-time completion. It's why his phone continues to ring. It's also one reason his winch of choice is Rufnek® by Tulsa Winch®.



"Winch overloading, injuries and downtime make a tremendous impact on the bottom line," says Steve Sibole, Sales Manager, Distributed Products, Tulsa Winch Group. "I think the industry as a whole is placing a bigger emphasis on safety and safer equipment as the smartest way to mitigate those risks. For years we've seen how cars and trucks are rated for safety. Now, we're seeing fleet managers and safety managers take a closer look at Tulsa Winch® in the same way. When it comes to advanced safety performance, no one can touch us."

For more than 75 years, Tulsa Winch® has distinguished itself from other winch brands by integrating safety by design into its portfolio of worm gear and hydraulic planetary winches—a distinction that carries a higher standard of operator safety to minimize injury, reduce equipment failure, and maximize winch performance. Unlike other brands that offer safety add-ons to their equipment, Tulsa Winch believes that safety should never be an option.

"We're focused on creating real value for the industries we serve," adds Sibole.

"When fleet managers and safety managers specify Rufnek® by Tulsa Winch®, they're investing in a product that consistently proves its value, whether it's reducing overloads that can cause operator injury or preventing equipment damage that can result in costly downtime."



Winch testing tower at the Tulsa Winch manufacturing facility in Tulsa, Oklahoma.

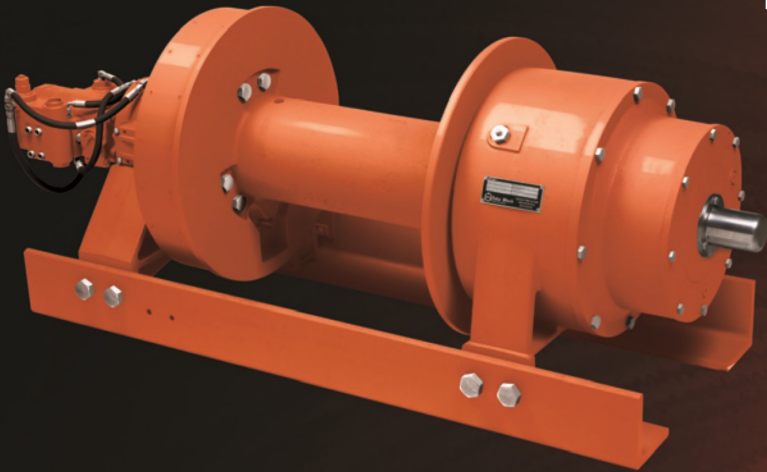
With state-of-the-art manufacturing facilities and a team of visionary engineers, Tulsa Winch Group is quietly revolutionizing winch equipment with smart technologies that enhance safer operation, while raising the bar for reliability and long equipment life. If you'd like to know more about Tulsa Winch Group and its equipment, call us at **918.298.8300** or visit our Web site at **www.team-twg.com**.

Tulsa Winch Group is backed by the strength of the Dover Corporation, a NYSE-traded, multi-billion dollar corporation that manufactures a diverse range of products and components for commercial and industrial use.

Headquartered in Tulsa, Oklahoma, Tulsa Winch Group is a global leader in standard and engineered winch, gearbox and load information systems for the Crane, Construction and Truck Equipment markets. Tulsa Winch Group is comprised of four companies that specialize in industryspecific winches—Tulsa Winch®, dp Winch®, Pullmaster Winch® and Greer Company®.



When It Comes To Advanced Safety, No Other Winch Comes Close.



Introducing RUFNEK®
with *Intelliguard*™



RUFNEK®

with *Intelliguard*™



**At Tulsa Winch Group, we know that
downtime affects your bottom line.**

That's why every planetary winch that bears the RUFNEK® brand now delivers a higher measure of safety than any other winch on the market. RUFNEK® with Intelliguard™ is added protection from winch overloading on bed trucks, winch trucks and pole trucks—helping operators avoid accidents and injuries.

And helping you prevent equipment failure, lost time and lost productivity.

Smart Technology to Help You Work Safer

RUFNEK® with Intelliguard™ is a capacity-alert system using field-proven technology to measure torque information each time your winch is operated. As the winch approaches its maximum rating, Intelliguard's light indicator warns the operator and records the event.

Intelliguard's electronic records are easily downloadable, enabling fleet and safety managers to make more informed decisions about preventive maintenance, equipment handling and safety training.

**If winch
overloading
is costing you,
it's time you
discovered
RUFNEK® with
Intelliguard™.**



RUFNEK® **with *Intelliguard™***

- ● ● Field-proven technology to reduce accidents, injuries, equipment failure and costly downtime due to winch overloading
- ● ● Captures critical data on winch overload activity, including date and time of event
- ● ● Records start-and-stop run times of the truck engine
- ● ● Provides an electronic record of vital winch data that is easy to analyze
- ● ● Easy-to-read light indicator alerts operators to safe and unsafe loading capacities based on winch rating, enabling them to make better, safer operating decisions
- ● ● Allows fleet and safety managers to properly size winches for specific applications

Available as a retrofit
on any in-field RUFNEK®
planetary winch



www.rufnekintelliguard.com

PO Box 1130 | Jenks, OK 74037-1130 | 918.298.8300