

BA590

BOOM ANGLE INDICATOR



- **Installation**

is simple, with only 4 mounting screws.

The pre-calibrated BA590 can be installed and fully operational in under an hour.

- **High and Low Angle Limits**

are fully settable from -15 to +85 degrees.

- **Audible and Visual Alarms**

indicate when set limits are reached.

- **Backlighted Digital and Analog Display**

is easy to read day or night.

- **IP65 Rated Display and Sensor Enclosures**

make the Greer BA590 perfect for all mobile crane applications.

Meets or Exceeds

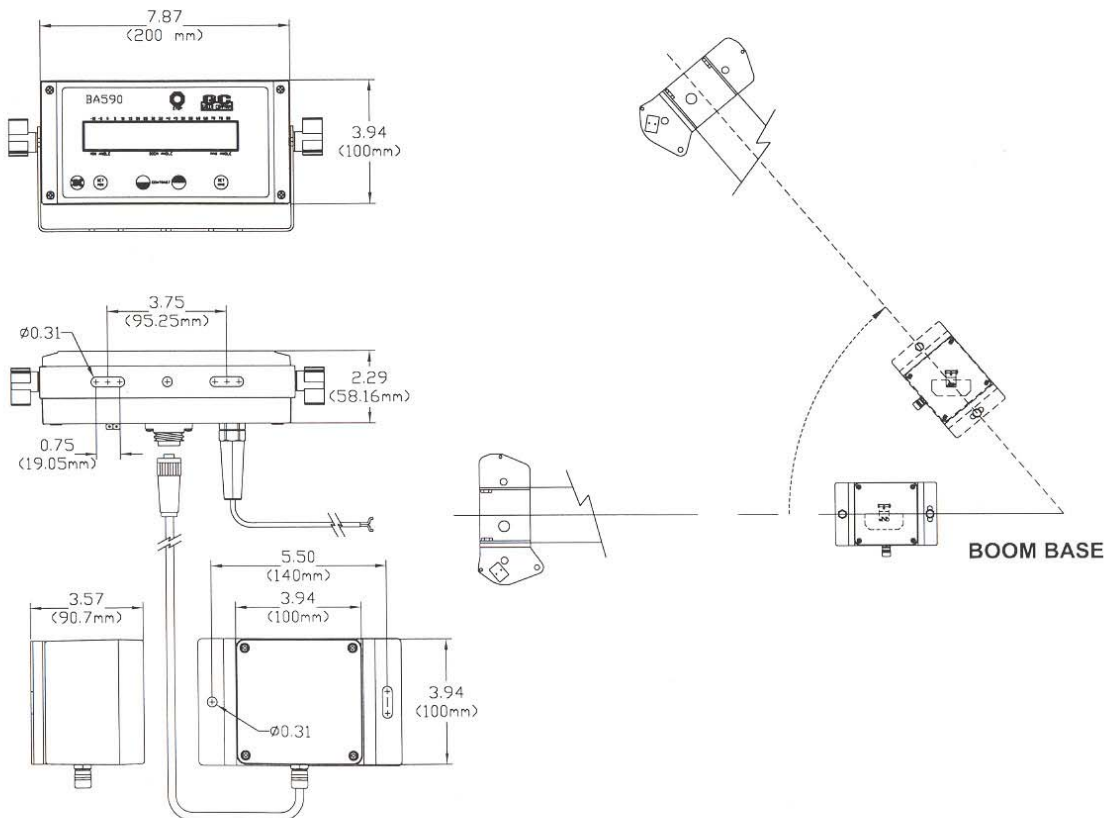
SAE and California OSHA requirements
for Crane Boom Angle Indicators

GC
GREER COMPANY

Indicators of Higher Intelligence

SPECIFICATIONS BA590

DIGITAL DISPLAY	7/8" x 4 3/4" Backlighted Digital Display
DIGITAL ACCURACY	±0.5°
SYSTEM ACCURACY	±0.2°
VISUAL ALARM	International Stop Symbol illuminates when either limit is reached.
AUDIBLE ALARM	Audible alarm is activated when either limit is reached.
POWER REQUIREMENTS	9 to 36 VDC
TEMPERATURE RANGE	-40° to +150° F (-40° to +70° C)
ENCLOSURES	IP65
CABLE LENGTHS	10' Power Cable -30' Sensor Cable



Crane Systems and Accessories