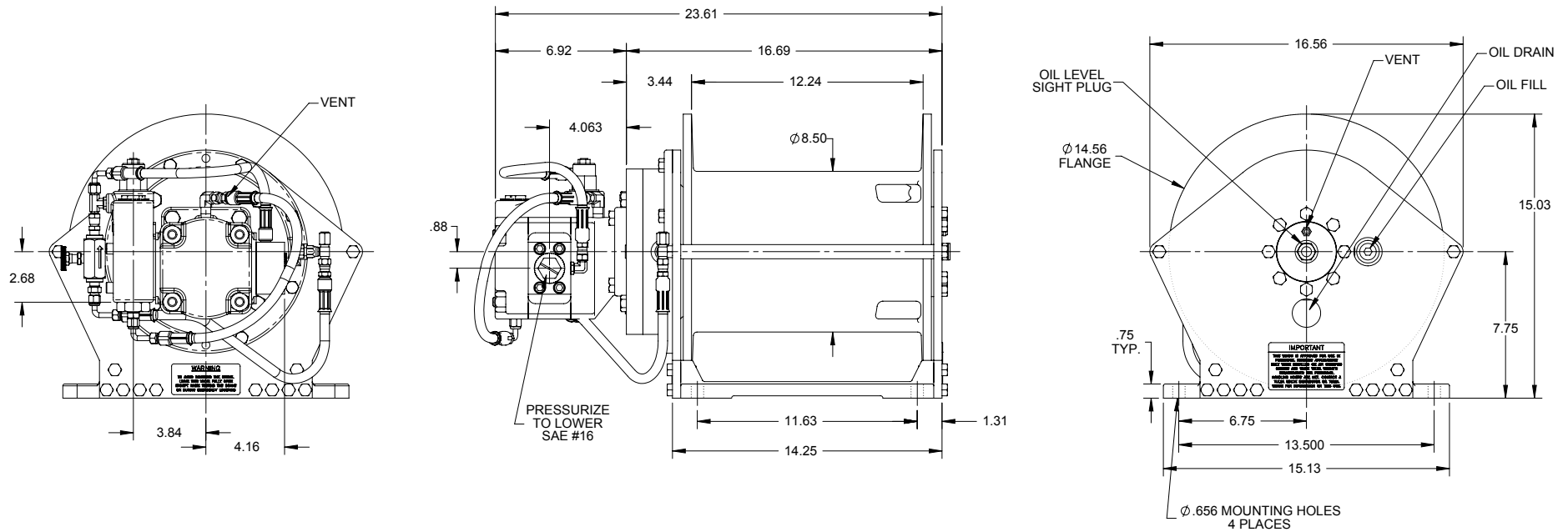
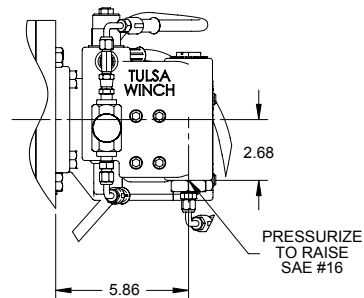


TH800-59



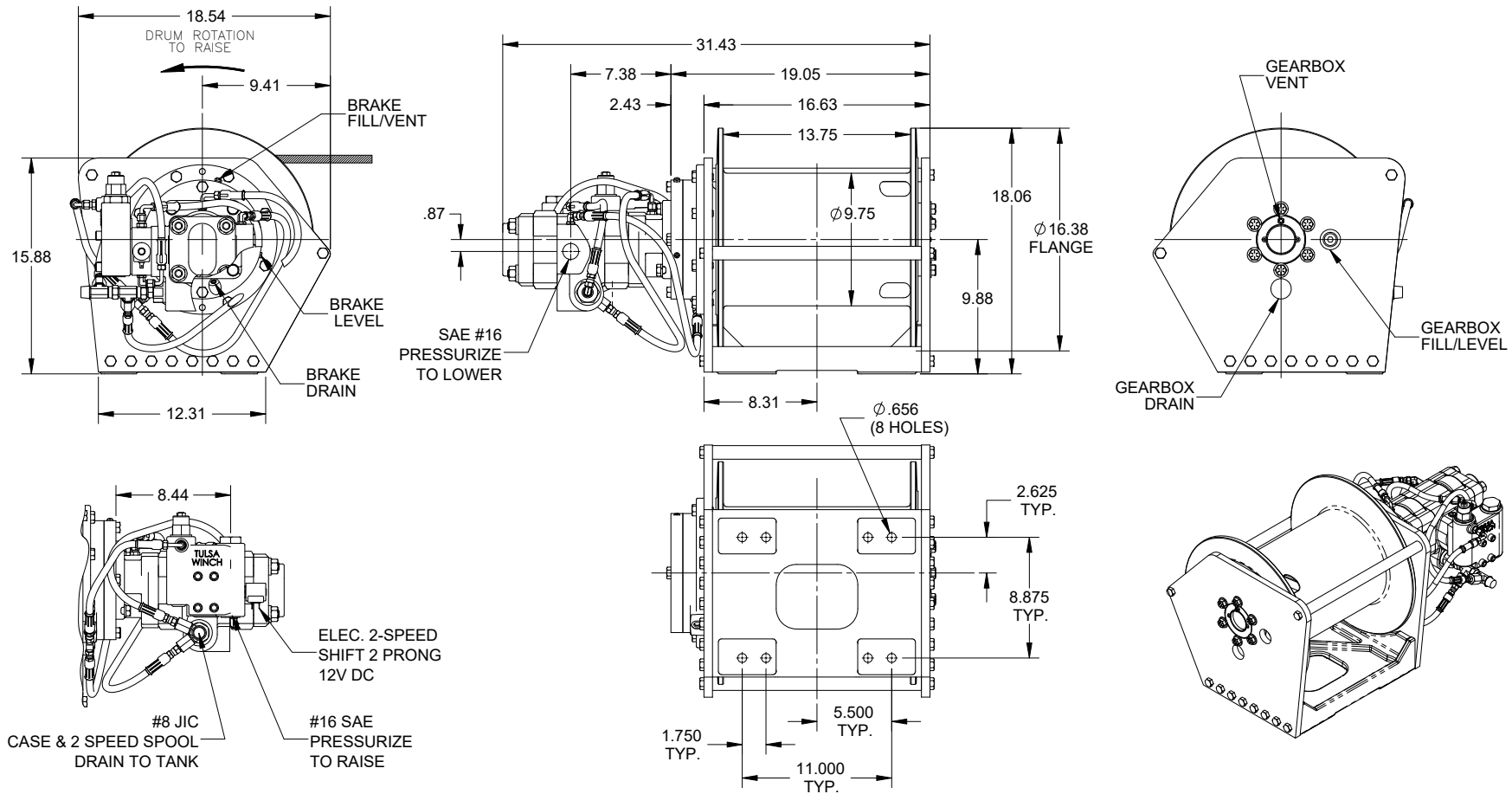
WINCH PERFORMANCE SPECIFICATIONS			
GEAR RATIO 59:1	WINCH PERFORMANCE AT 50 GPM 1900 PSI 2.94 CID		TOTAL DRUM CAPACITY (FT)
LAYER	STALL LINE PULL (LBS)	WINCH SPEED (FPM)	$\phi .50$ CABLE
FIRST	8,000	141	57
SECOND	7,231	157	119
THIRD	6,574	172	189
FOURTH	6,026	188	264
FIFTH	5,562	204	346
*SIXTH	5,165	219	434



*THIS LAYER DOES NOT MEET ANSI 30.5 FOR .50" INCH FLANGE FREEBOARD.

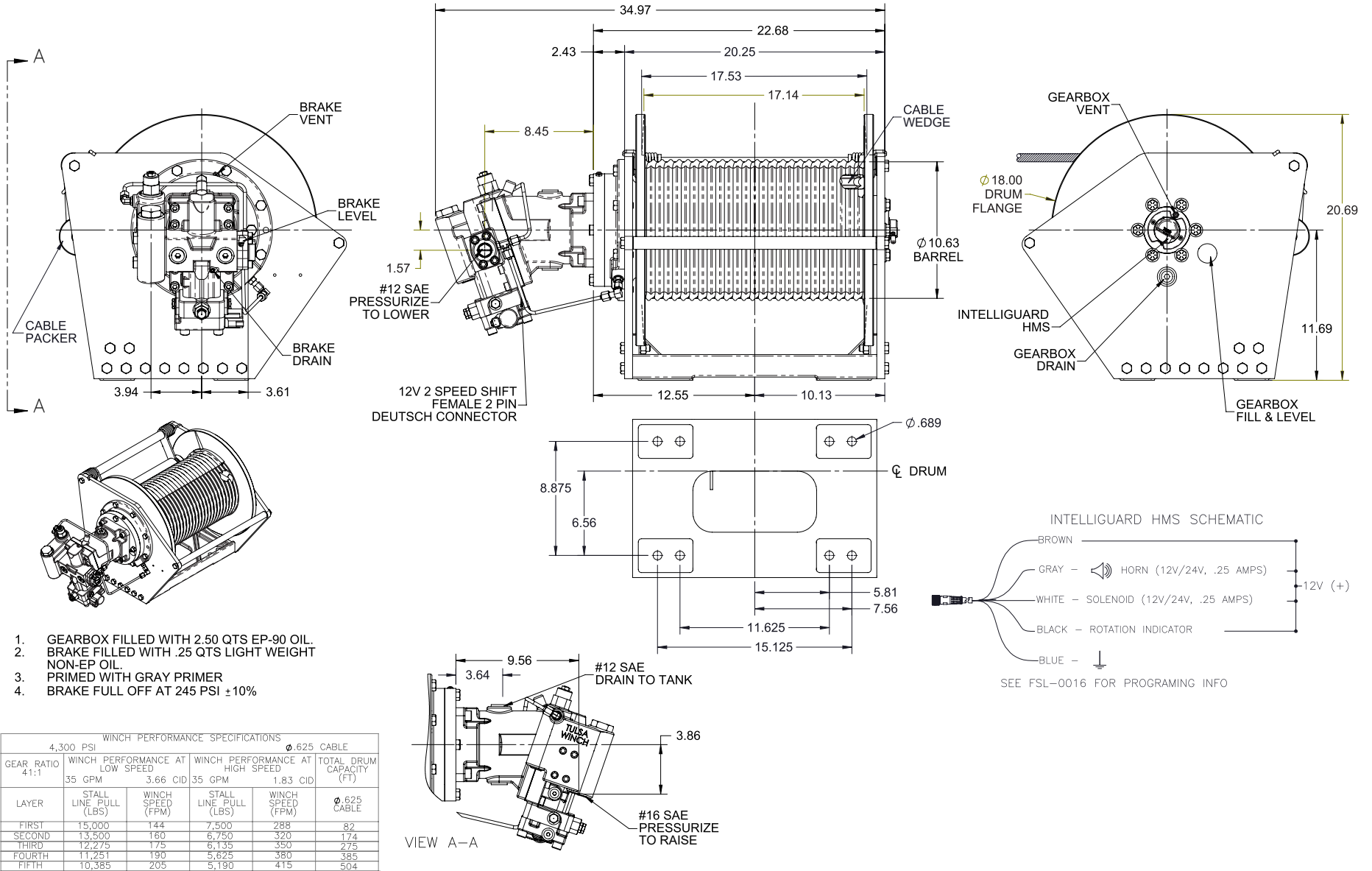
PART #: 82279001-API

TH1200-41



WINCH PERFORMANCE SPECIFICATIONS					
2,575 PSI			$\phi .563$ CABLE		
GEAR RATIO 41:1	WINCH PERFORMANCE AT LOW SPEED		WINCH PERFORMANCE AT HIGH SPEED		TOTAL DRUM CAPACITY (FT)
	60 GPM	4.92 CID	60 GPM	2.46 CID	
LAYER	STALL LINE PULL (LBS)	WINCH SPEED (FPM)	STALL LINE PULL (LBS)	WINCH SPEED (FPM)	$\phi .563$ CABLE
FIRST	12,000	144	6,000	288	65
SECOND	10,819	160	5,409	319	137
THIRD	9,849	175	4,924	350	216
FOURTH	9,039	191	4,519	382	302
FIFTH	8,352	207	4,176	413	395

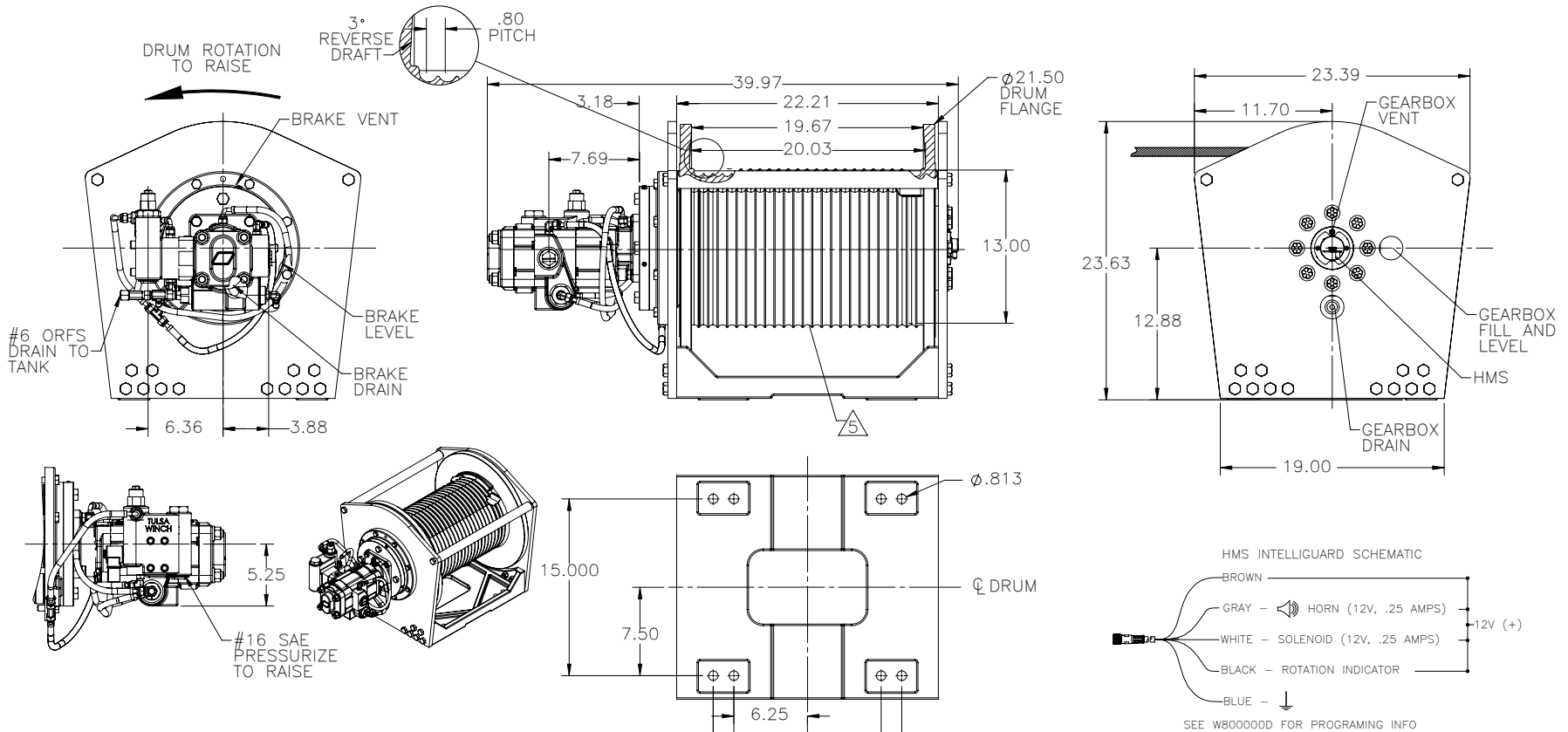
1. UNIT PRIMED WITH GRAY PRIMER.
2. GEARBOX FILLED WITH 1.50 QTS. EP-90 OIL.
3. BRAKE FILLED WITH .25 QTS. LIGHTWEIGHT NON-EP OIL.
4. UNIT WILL ACCEPT DL2.
5. BRAKE FULL OFF AT 225 PSI $\pm 10\%$.



1. GEARBOX FILLED WITH 2.50 QTS EP-90 OIL.
2. BRAKE FILLED WITH .25 QTS LIGHT WEIGHT NON-EP OIL.
3. PRIMED WITH GRAY PRIMER
4. BRAKE FULL OFF AT 245 PSI ±10%

WINCH PERFORMANCE SPECIFICATIONS					
4,300 PSI		Ø .625 CABLE			
GEAR RATIO 41:1	WINCH PERFORMANCE AT LOW SPEED		WINCH PERFORMANCE AT HIGH SPEED		TOTAL DRUM CAPACITY (FT)
	35 GPM	3.66 CID	35 GPM	1.83 CID	
LAYER	STALL LINE PULL (LBS)	WINCH SPEED (FPM)	STALL LINE PULL (LBS)	WINCH SPEED (FPM)	Ø .625 CABLE
FIRST	15,000	144	7,500	288	82
SECOND	13,500	180	6,750	320	174
THIRD	12,275	175	6,135	350	275
FOURTH	11,251	190	5,625	380	385
FIFTH	10,385	205	5,190	415	504

TH1700-46



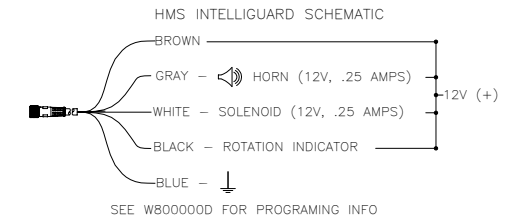
Performance Data

Ratio 46:1
 Pressure (psi) Flow (gpm) Cable
 3400 70 3/4

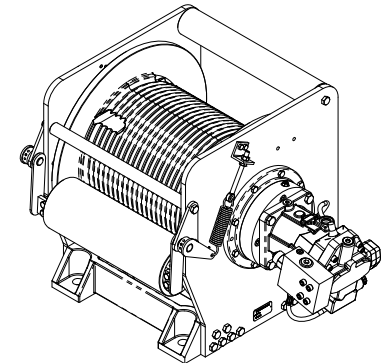
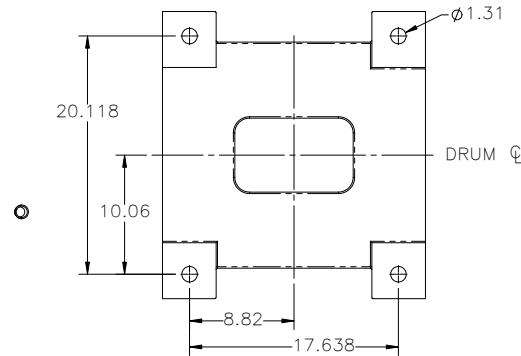
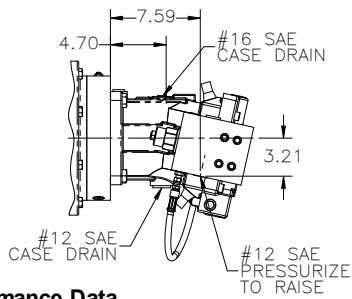
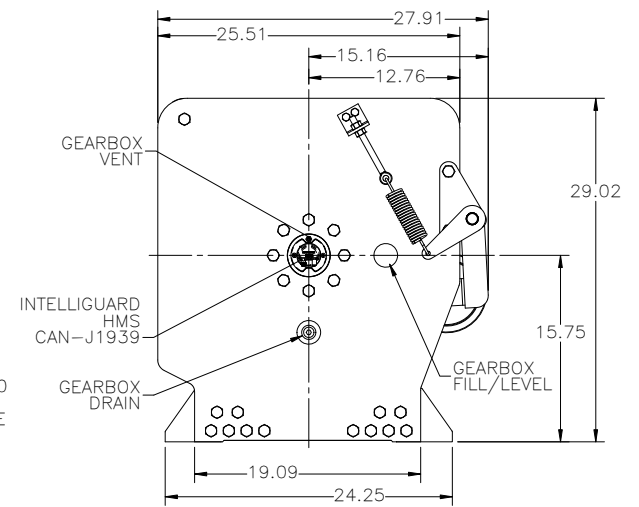
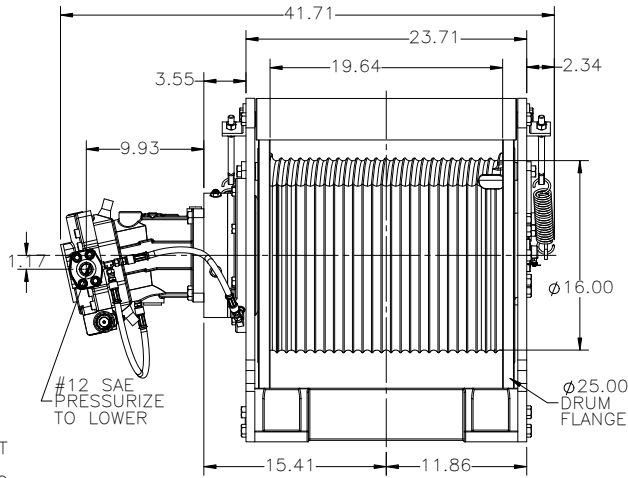
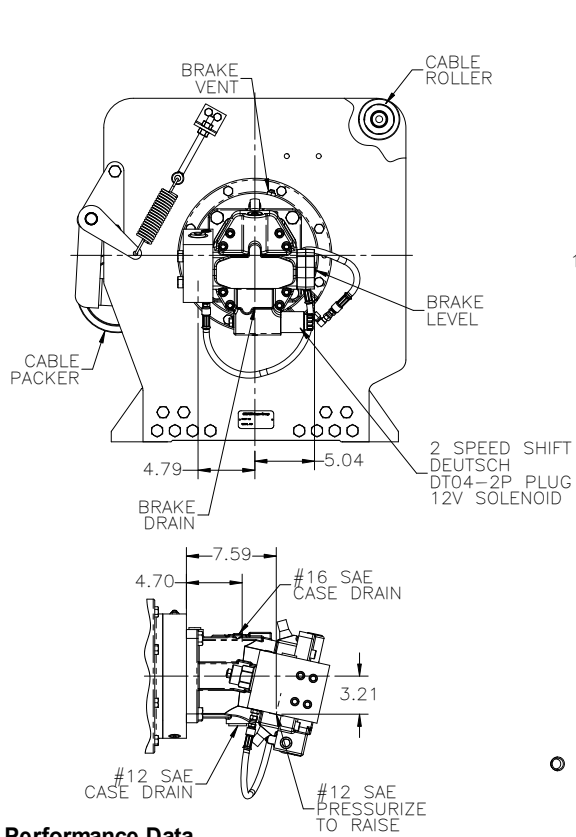
Layer	Line Pull		Line Speed		Rope Capacity	
	lb	kN	fpm	mpm	ft	m
1	18450	82.1	131	39.8	96	29
2	16659	74.1	145	44.1	203	62
3	15167	67.5	159	48.5	320	97
4	13920	61.9	173	52.8	447	136
5	12863	57.2	188	57.2	586	178

NOTES:

1. GEARBOX FILLED WITH 6.0 QTS EP-90 OIL.
2. BRAKE FILLED WITH .25 QTS LIGHT WEIGHT NON-EP OIL.
3. UNIT PRIMED WITH BLACK PRIMER.
4. BRAKE FULL OFF AT 330 PSI ±10%.
5. LEBUS STYLE ANTI-SYNCHRONOUS DRUM.



TH2100-55



Performance Data

Ratio 55:1
Pressure (psi) Flow (gpm) Cable
3750 72 3/4

Layer	Low Speed				High Speed				Rope Capacity	
	Line Pull lb	Line Pull kN	Line Speed fpm	Line Speed mpm	Line Pull lb	Line Pull kN	Line Speed fpm	Line Speed mpm		
1	21000	93.4	178	54.1	10556	47.0	355	108.2	117	36
2	19376	86.2	193	59.0	9688	43.1	387	117.9	244	74
3	17905	79.6	209	63.8	8952	39.8	419	127.6	382	117
4	16641	74.0	225	68.7	8320	37.0	451	137.3	531	162
5	15544	69.1	241	73.5	7772	34.6	482	147.0	689	210