



RUFNEK®

A Product of  **TULSA WINCH**

Because
Tough
Enough
Is Never
Enough.

Worm Gear Winches

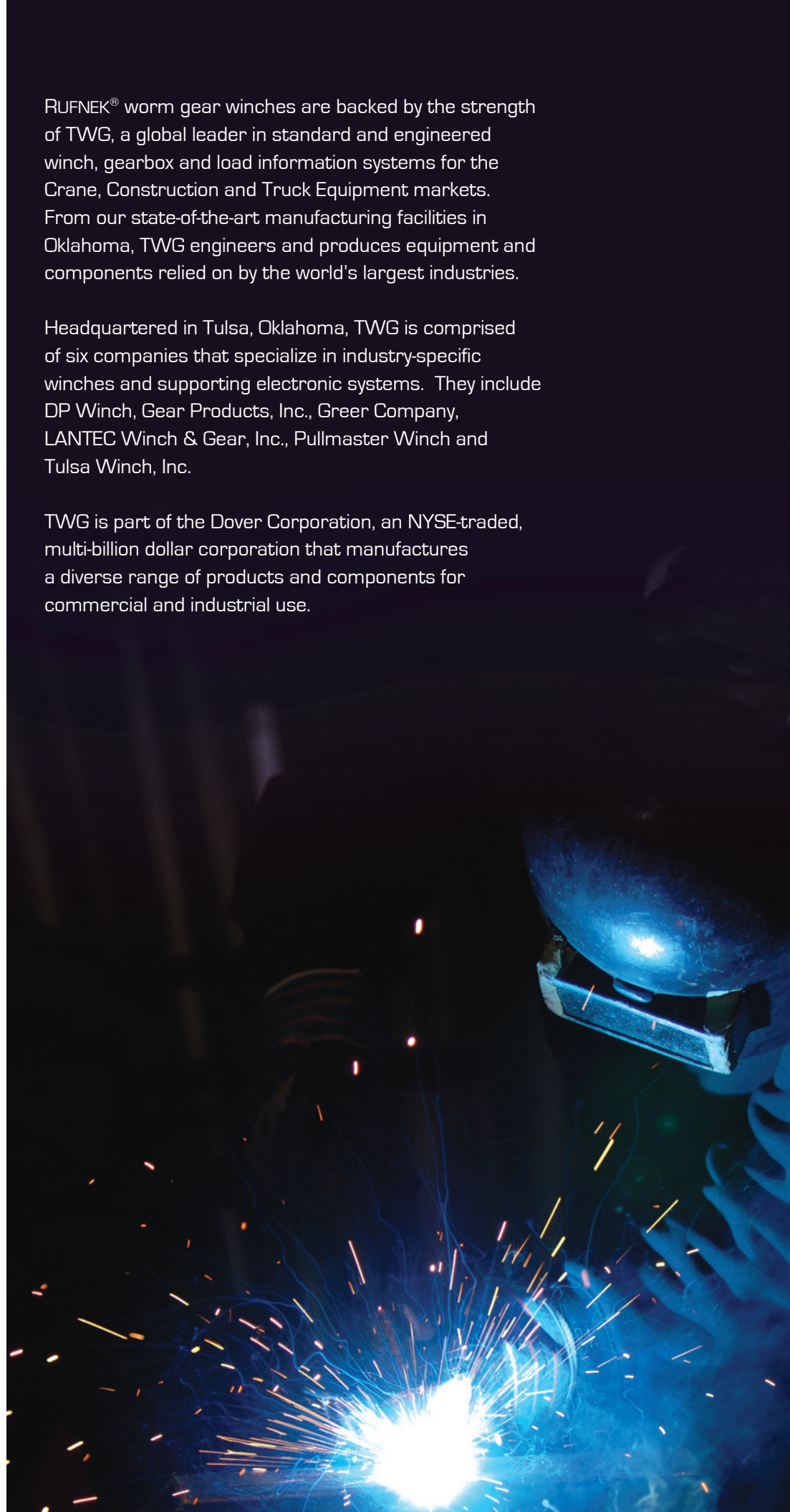
Strength You Can Depend On




RUFNEK[®] worm gear winches are backed by the strength of TWG, a global leader in standard and engineered winch, gearbox and load information systems for the Crane, Construction and Truck Equipment markets. From our state-of-the-art manufacturing facilities in Oklahoma, TWG engineers and produces equipment and components relied on by the world's largest industries.

Headquartered in Tulsa, Oklahoma, TWG is comprised of six companies that specialize in industry-specific winches and supporting electronic systems. They include DP Winch, Gear Products, Inc., Greer Company, LANTEC Winch & Gear, Inc., Pullmaster Winch and Tulsa Winch, Inc.

TWG is part of the Dover Corporation, an NYSE-traded, multi-billion dollar corporation that manufactures a diverse range of products and components for commercial and industrial use.





You Want a Winch That Works as Hard as You Do

So why would you trust your oilfield fleet to anything but RUFNEK® winches?

At Tulsa Winch, we take performance seriously—and it shows. Our RUFNEK® worm gear winches are as rugged and reliable as their name, and engineered to deliver the extra long life today's fleet managers demand.

Unlike other winches, RUFNEK® worm gear winches are designed from the very start to perform under the toughest conditions and the harshest terrains. We manufacture our heavy-duty winches and accessories with the quality construction and outstanding strength you need to get the job done, get it done right, and get it done safely.

At TWG, we continue to raise the bar on how winches should perform—and it's been that way for more than 75 years.

RUFNEK[®] worm gear winches are specifically designed for the world's Oilfield Industry. In the harshest terrains, on the most challenging projects, RUFNEK[®] worm gear winches set a new benchmark for safe, reliable operation and rugged performance.



RUFNEK[®] Worm Gear Winches

Advanced Features and Superior Benefits

Mechanical input or integral hydraulic motor and air control packages for clutch and band brake operation.

Offers optimal flexibility in selecting appropriate drives for applications.

Clutch position indicator.

Provides safe, visual means of ensuring positive clutch engagement.

Sliding clutch with reverse draft.

Assures complete and even engagement under load.

Adjustable oil brake with automatic engagement during pay out.

Enhances brake life and improves load management.

Air-applied band brake.

Prevents bird nesting of cable during free-spool operation.

**Technical and
Customer Support**

918.298.8300

Product integrity. Service integrity. Just two of the strengths that have made Tulsa Winch[®] and RUFNEK[®] the Oilfield Industry's most trusted names in winch systems.

Our Technical Support and Customer Support teams are always available to answer your equipment questions or help you improve your fleet safety.



RUFNEK®

Strong, durable,
long lasting.

RUFNEK® worm gear winches are built for tough oilfield and heavy haul applications and available in pulling capacities from 10,000 to 130,000 pounds.

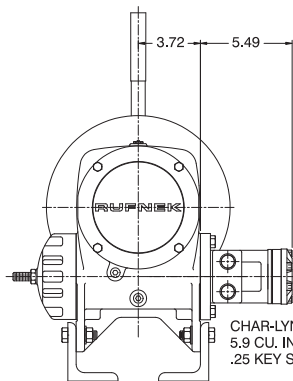
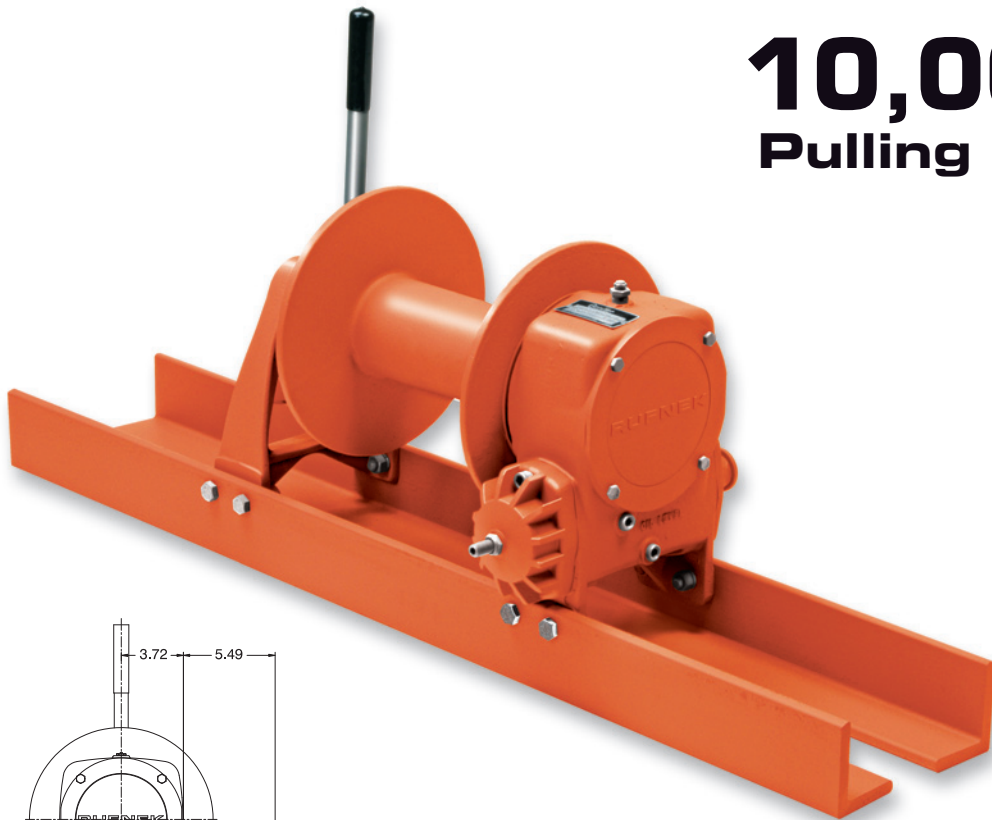


RUFNEK® Worm Gear Winches

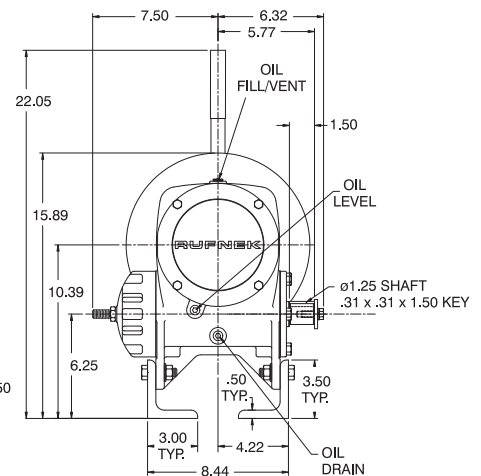
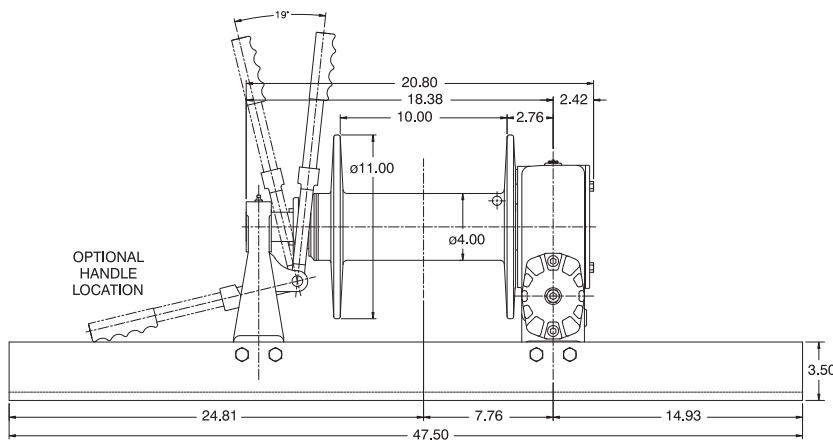
RN10W

RUFNEK® Worm Gear Winches

10,000 lb. Pulling Capacity



CHAR-LYNN H+ SERIES MOTOR,
5.9 CU. IN. 2 BOLT "A" MOUNT 1.00 DIA.,
.25 KEY SHAFT, 7/8 - 14 O'RING PORTS



Approximate weight: 215 lb Mechanical / 227 lb Hydraulic

HYDRAULIC PERFORMANCE DATA

Layer	Linepull (lb)	Linepull (kg)	Linespeed (fpm)	Linespeed (mpm)	Cable Cap. - .4375" Ø (ft)	Cable Cap. - .4375" Ø (m)
1	10,000	4,536	21	6	23	7
2	8,358	3,791	25	8	51	15
3	7,176	3,255	29	9	83	25
4	6,287	2,852	33	10	119	36
5	5,594	2,537	37	11	160	49

MECHANICAL DRIVE

Input Torque-Static (lb-in)	Input Torque-Static (Nm)	Input Torque-Dynamic (lb-in)	Input Torque-Dynamic (Nm)	Input Speed (rpm)
1,618	183	1,100	124	max. 800

HYDRAULIC DRIVE (5.9 CID Motor)

Pressure (Δ psi)		Flow (gpm)	
Pressure (Δ bar)	Flow (lpm)	Pressure (Δ bar)	Flow (lpm)
1,600	103	20	76

4.00 BBI x 11.00 FL x 10.00 W

Cable Size (in)	Capacity (ft)	Capacity (m)
0.375	343	105
0.5	198	60

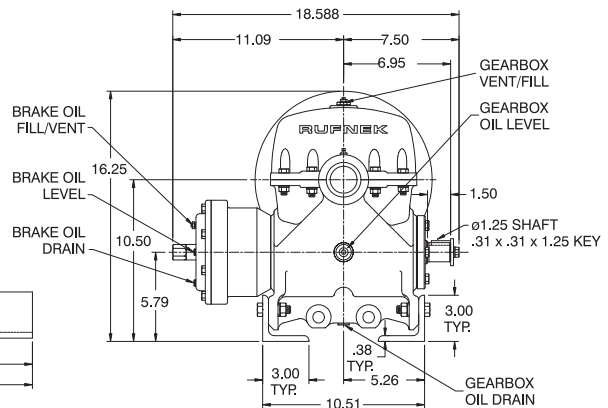
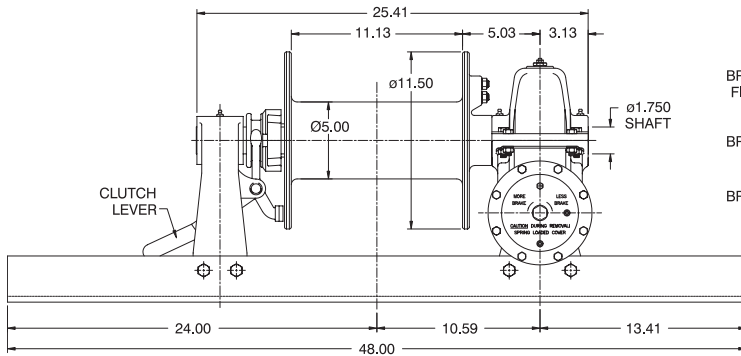
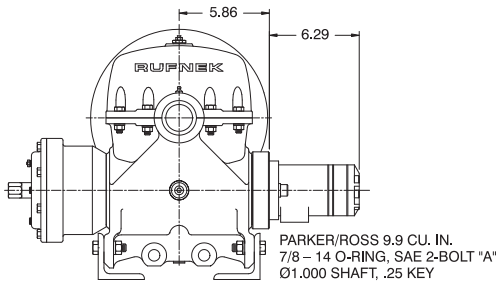
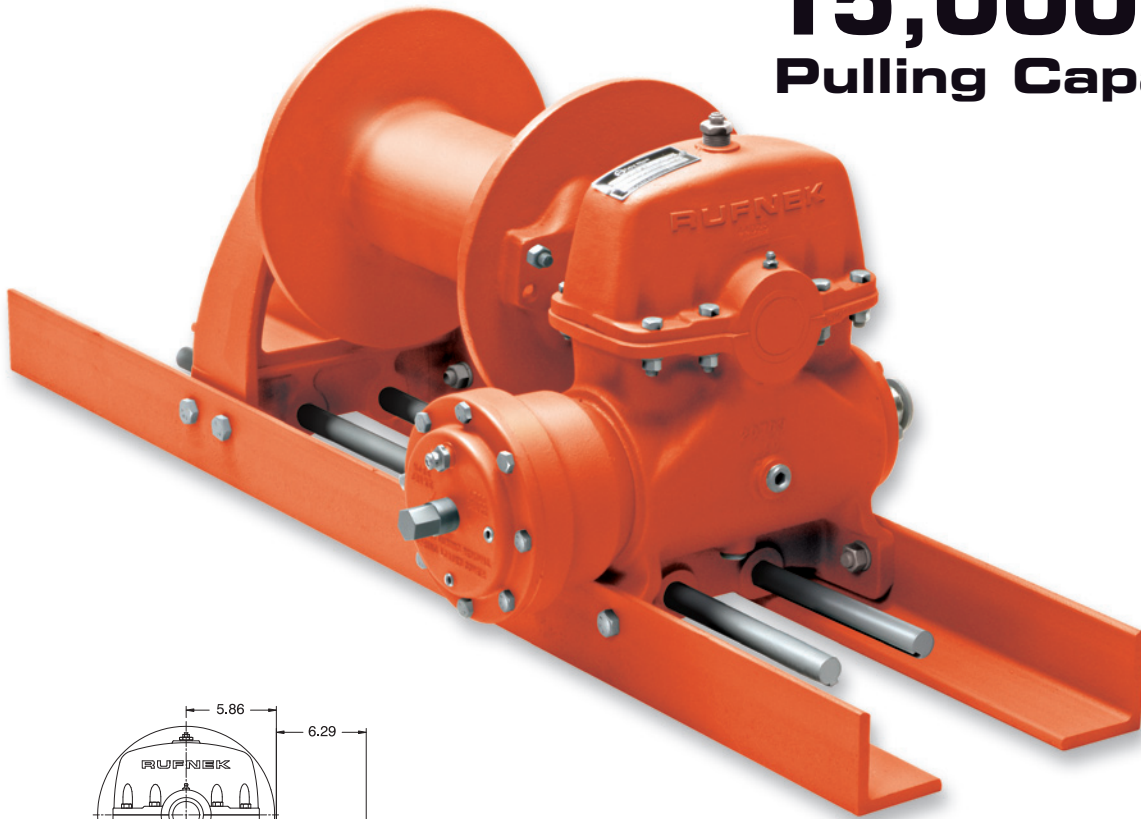
⚠ CAUTION:

The last 5 wraps of cable must be left on the drum to assist the cable clamp in holding the load.

⚠ WARNING:

Winches and capstans are not intended to be used for lifting or moving of persons.

15,000 lb. Pulling Capacity



Approximate weight: 260 lb Mechanical / 276 lb Hydraulic

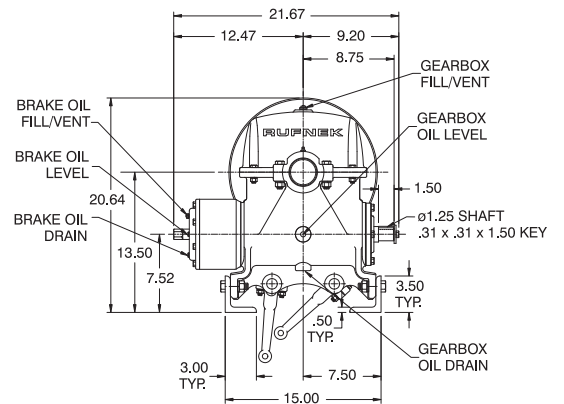
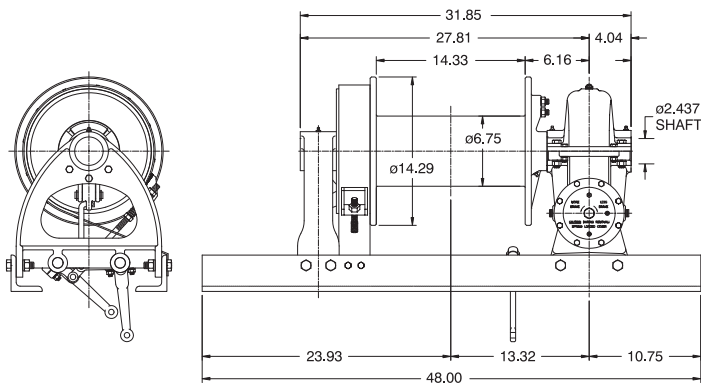
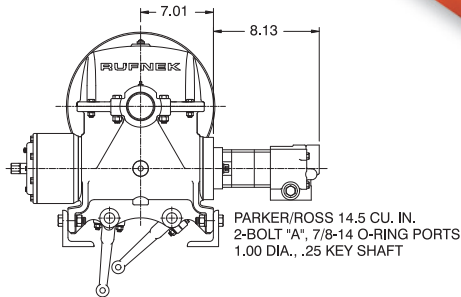
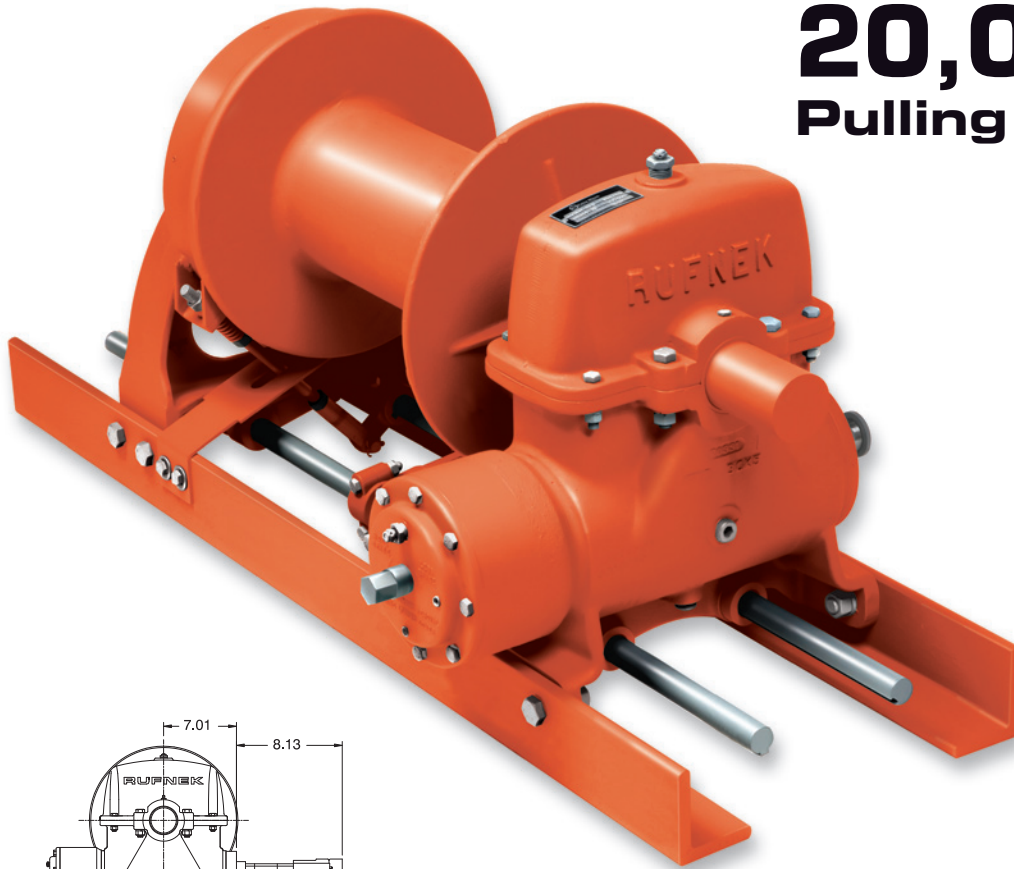
HYDRAULIC PERFORMANCE DATA						MECHANICAL DRIVE					
Layer	Linepull (lb)	Linepull (kg)	Linespeed (fpm)	Linespeed (mpm)	Cable Cap. - .5" Ø (ft)	Cable Cap. - .5" Ø (m)	Input Torque-Static (lb-in)	Input Torque-Static (Nm)	Input Torque-Dynamic (lb-in)	Input Torque-Dynamic (Nm)	Input Speed (rpm)
1	15,000	6,804	17	5	29	9	3,307	374	2,412	273	max. 600
2	12,700	5,761	20	6	62	19	HYDRAULIC DRIVE (9.9 CID Motor)				
3	11,006	4,992	23	7	101	31	Pressure		Flow		
4	9,712	4,405	27	8	145	44	(Δ psi)	(Δ bar)	(gpm)	(lpm)	
5	8,989	4,077	30	9	194	59	2,000	138	15	57	
5.00 BBI x 11.50 FL x 11.13 W											
CAUTION:		WARNING:				Cable Size (in)	Capacity (ft)	Capacity (m)			
The last 5 wraps of cable must be left on the drum to assist the cable clamp in holding the load.		Winches and capstans are not intended to be used for lifting or moving of persons.				0.4375	269	82			
						0.5625	130	40			

RUFNEK® Worm Gear Winches **RN15W**

RN20W

RUFNEK® Worm Gear Winches

20,000 lb. Pulling Capacity



Approximate weight: 520 lb Mechanical / 545 lb Hydraulic

HYDRAULIC PERFORMANCE DATA

Layer	Linepull (lb)	Linepull (kg)	Linespeed (fpm)	Linespeed (mpm)	Cable Cap. - .625" Ø (ft)	Cable Cap. - .625" Ø (m)
1	20,000	9,072	24	7	38	12
2	17,130	7,770	28	9	83	25
3	14,976	6,793	33	10	134	41
4	13,302	6,034	37	11	192	59
5	11,965	5,427	41	13	256	78

MECHANICAL DRIVE

Input Torque-Static (lb-in)	Input Torque-Static (Nm)	Input Torque-Dynamic (lb-in)	Input Torque-Dynamic (Nm)	Input Speed (rpm)
5,539	626	4,000	452	max. 500

HYDRAULIC DRIVE (14.5 CID Motor)

Pressure (Δ psi)		Flow (gpm)	
Pressure (Δ bar)	Flow (lpm)	Pressure (Δ bar)	Flow (lpm)
2,225	114	153	25

6.75 BBI x 14.29 FL x 14.33 W

Cable Size (in)	Capacity (ft)	Capacity (m)
.500	386	118
.5625	282	86

⚠ CAUTION:

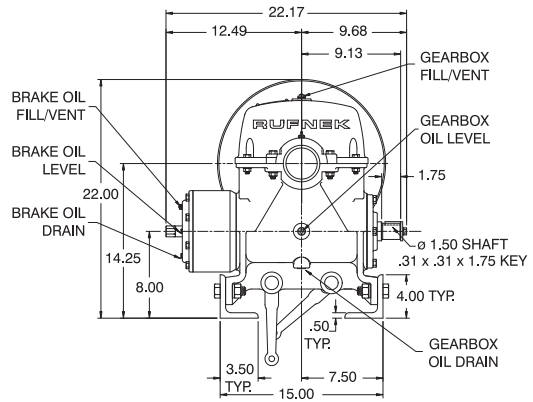
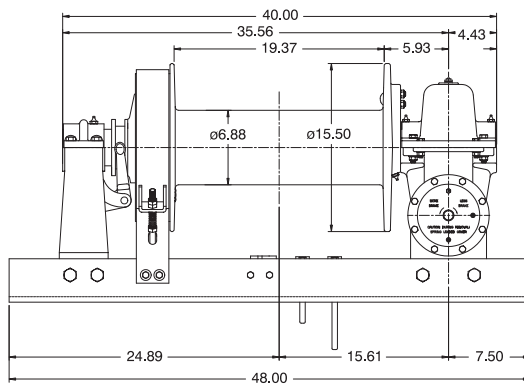
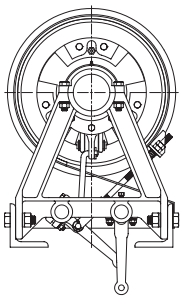
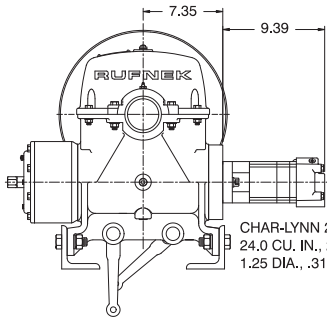
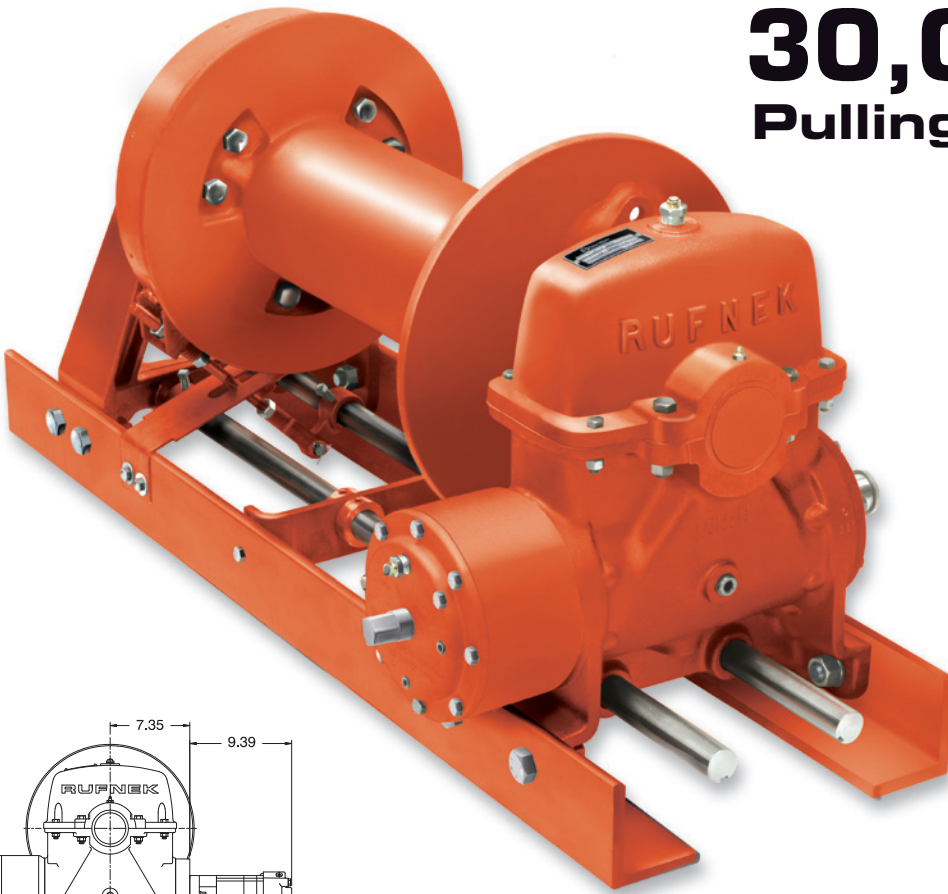
The last 5 wraps of cable must be left on the drum to assist the cable clamp in holding the load.

⚠ WARNING:

Winches and capstans are not intended to be used for lifting or moving of persons.

30,000 lb. Pulling Capacity

RN30W



Approximate weight: 650 lb Mechanical / 678 lb Hydraulic

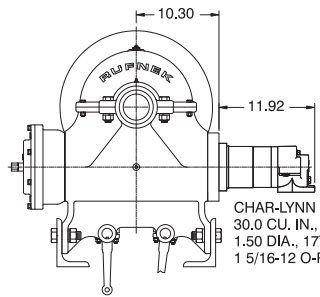
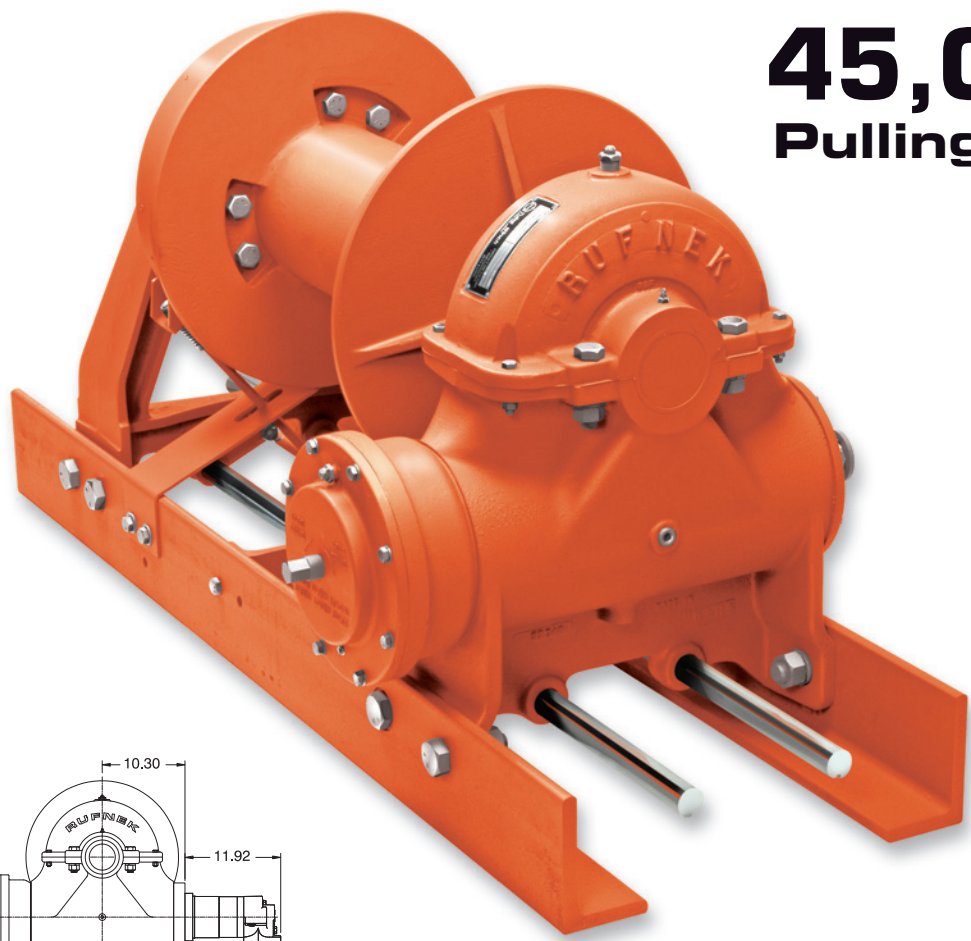
HYDRAULIC PERFORMANCE DATA						MECHANICAL DRIVE						
Layer	Linepull (lb)	Linepull (kg)	Linespeed (fpm)	Linespeed (mpm)	Cable Cap. - .75"Ø (ft)	Cable Cap. - .75"Ø (m)	Input Torque-Static (lb-in)	Input Torque-Static (Nm)	Input Torque-Dynamic (lb-in)	Input Torque-Dynamic (Nm)	Input Speed (rpm)	
1	30,000	13,608	11	3	45	14	8,153	921	5,851	661	max. 400	
2	25,074	11,374	13	4	99	30	HYDRAULIC DRIVE (24.0 CID Motor)					
3	21,534	9,768	15	5	161	49	Pressure (Δ psi)		Flow (gpm)			
4	18,870	8,559	17	5	233	71	(Δ bar)		(lpm)			
5	16,793	7,617	19	6	313	95	1,750		121		20	
							76		6.88 BBI x 15.50 FL x 19.37 W			
CAUTION:		WARNING:					Cable Size (in)	Capacity (ft)	Capacity (m)			
The last 5 wraps of cable must be left on the drum to assist the cable clamp in holding the load.		Winches and capstans are not intended to be used for lifting or moving of persons.					0.5625	493	150			
							0.625	450	137			

RUFNEK® Worm Gear Winches

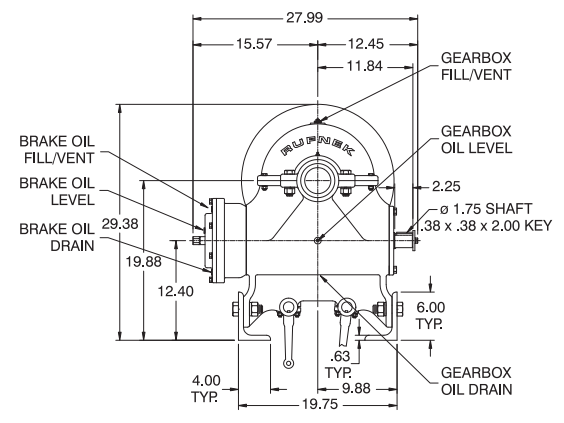
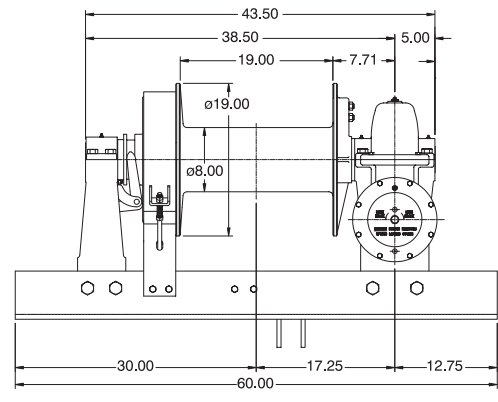
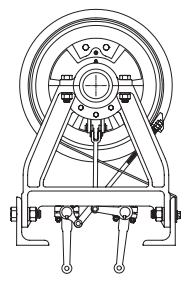
RN45W

RUFNEK® Worm Gear Winches

45,000 lb. Pulling Capacity



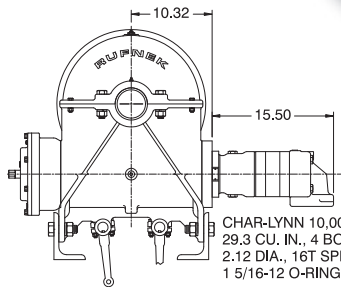
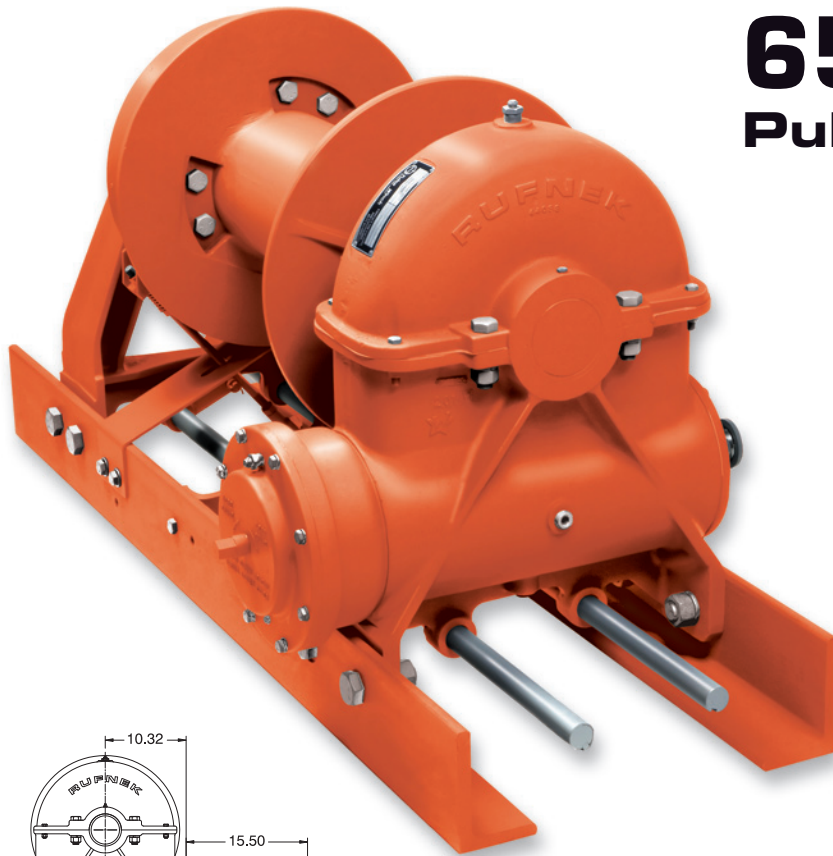
CHAR-LYNN 6,000 SERIES MOTOR,
30.0 CU. IN., 4 BOLT "C" MOUNT
1.50 DIA., 17T SPLINED SHAFT
1 5/16-12 O-RING PORTS



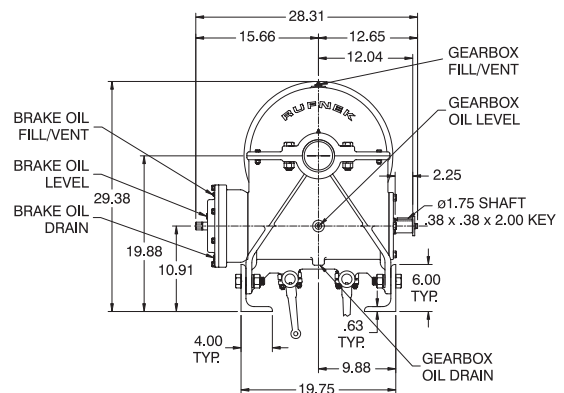
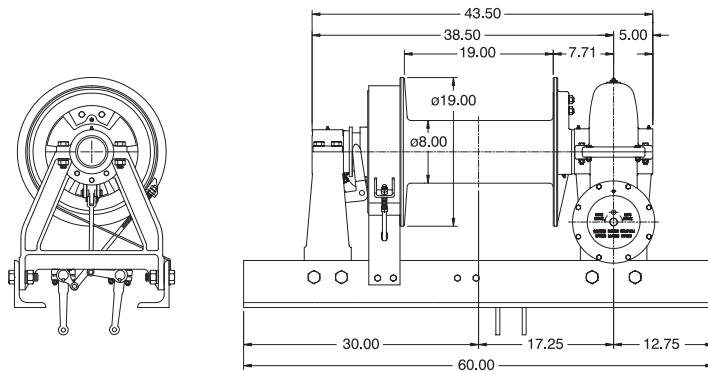
Approximate weight: 1,076 lb Mechanical / 1,138 lb Hydraulic

HYDRAULIC PERFORMANCE DATA						MECHANICAL DRIVE					
Layer	Linepull (lb)	Linepull (kg)	Linespeed (fpm)	Linespeed (mpm)	Cable Cap. - .875" Ø		Input Torque-Static		Input Torque-Dynamic		Input Speed (rpm)
					(ft)	(m)	(lb-in)	(Nm)	(lb-in)	(Nm)	
1	45,000	20,412	20	6	44	13	13,089	1,479	9,458	1,069	max. 400
2	37,597	17,054	23	7	97	30	HYDRAULIC DRIVE (30.0 CID Motor)				
3	32,280	14,642	27	8	158	48					
4	28,281	12,828	31	9	228	69	Pressure (Δ psi) (Δ bar)		Flow (gpm) (lpm)		
5	25,163	11,414	35	11	306	93	2,325	160	40	265	
8.00 BBI x 19.00 FL x 19.00 W											
⚠ CAUTION:		⚠ WARNING:				Cable Size (in)	Capacity (ft)	Capacity (m)			
The last 5 wraps of cable must be left on the drum to assist the cable clamp in holding the load.		Winches and capstans are not intended to be used for lifting or moving of persons.				0.75	442	135			
						1.0	291	89			

65,000 lb. Pulling Capacity



CHAR-LYNN 10,000 SERIES MOTOR,
29.3 CU. IN., 4 BOLT "C" MOUNT
2.12 DIA., 16T SPLINED SHAFT
1 5/16-12 O-RING PORTS



Approximate weight: 1,346 lb Mechanical / 1,441 lb Hydraulic

HYDRAULIC PERFORMANCE DATA						MECHANICAL DRIVE					
Layer	Linepull (lb)	Linepull (kg)	Linespeed (fpm)	Linespeed (mpm)	Cable Cap. - 1.0" Ø (ft)	Cable Cap. - 1.0" Ø (m)	Input Torque-Static (lb-in)	Input Torque-Static (Nm)	Input Torque-Dynamic (lb-in)	Input Torque-Dynamic (Nm)	Input Speed (rpm)
1	65,000	29,484	22	7	40	12	15,159	1,713	10,954	1,238	max. 400
2	53,194	24,129	27	8	90	27	HYDRAULIC DRIVE (29.3 CID Motor)				
3	45,010	20,417	32	10	148	45	Pressure		Flow		
4	39,008	17,694	37	11	215	66	(Δ psi)	(Δ bar)	(gpm)	(lpm)	
5*	34,491	15,612	42	13	291	89	2,700	186	55	208	
8.00 BBI x 19.00 FL x 19.00 W							Cable Size (in)	Capacity (ft)	Capacity (m)		
CAUTION:							0.875	306	93		
The last 5 wraps of cable must be left on the drum to assist the cable clamp in holding the load.							1.125	188	57		
WARNING:							Winches and capstans are not intended to be used for lifting or moving of persons.				

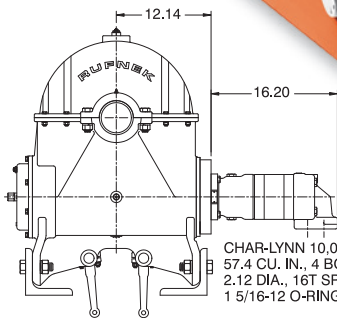
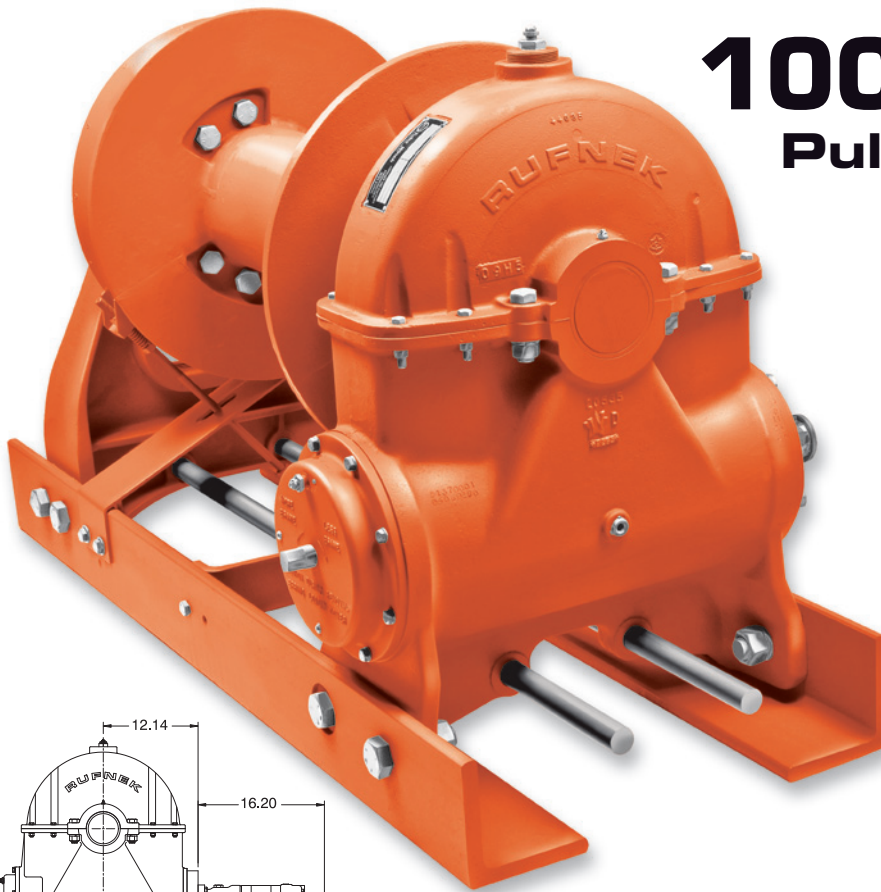
*Layer does not meet SAE J706 Requirement

RUFNEK® Worm Gear Winches **RN65W**

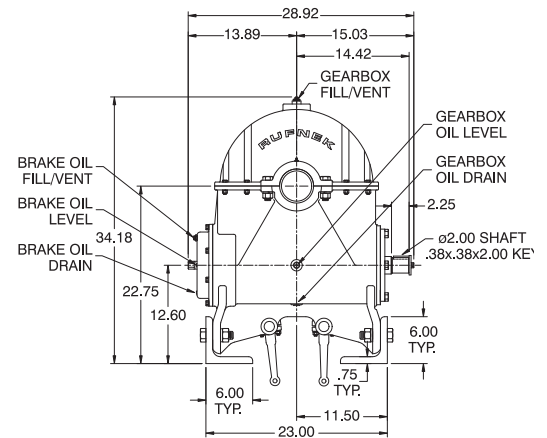
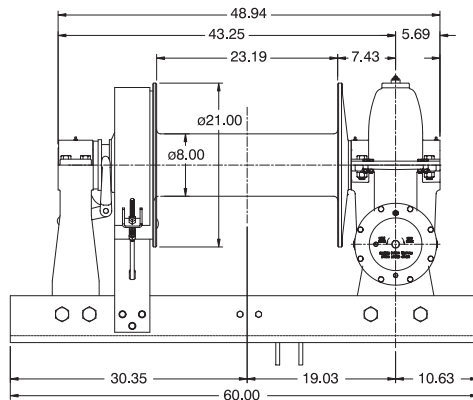
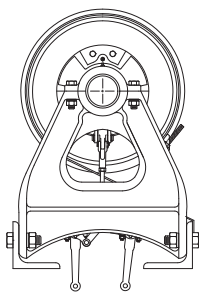
RN100W

RUFNEK® Worm Gear Winches

100,000 lb. Pulling Capacity



CHAR-LYNN 10,000 SERIES MOTOR,
57.4 CU. IN., 4 BOLT "C" MOUNT
2.12 DIA., 16T SPLINED SHAFT
1 5/16-12 O-RING PORTS



Approximate weight: 1,975 lb Mechanical / 2,076 lb Hydraulic

HYDRAULIC PERFORMANCE DATA

Layer	Linepull		Linespeed		Cable Cap. - 1.0" Ø	
	(lb)	(kg)	(fpm)	(mpm)	(ft)	(m)
1	100,000	45,360	7	2	49	15
2	81,866	37,134	9	3	108	33
3	69,271	31,421	10	3	179	55
4	60,035	27,232	12	4	260	79
5	52,972	24,028	14	4	352	107

MECHANICAL DRIVE

Input Torque-Static		Input Torque-Dynamic		Input Speed (rpm)
(lb-in)	(Nm)	(lb-in)	(Nm)	
20,100	2,271	14,500	1,639	max. 400

HYDRAULIC DRIVE (57.4 CID Motor)

Pressure (Δ psi)		Flow (gpm)	
(Δ bar)	(gpm)	(lpm)	(lpm)
1,750	40	151	

8.00 BBI x 21.00 FL x 23.19 W

Cable Size (in)	Capacity (ft)	Capacity (m)
0.875	487	148
1.125	321	98

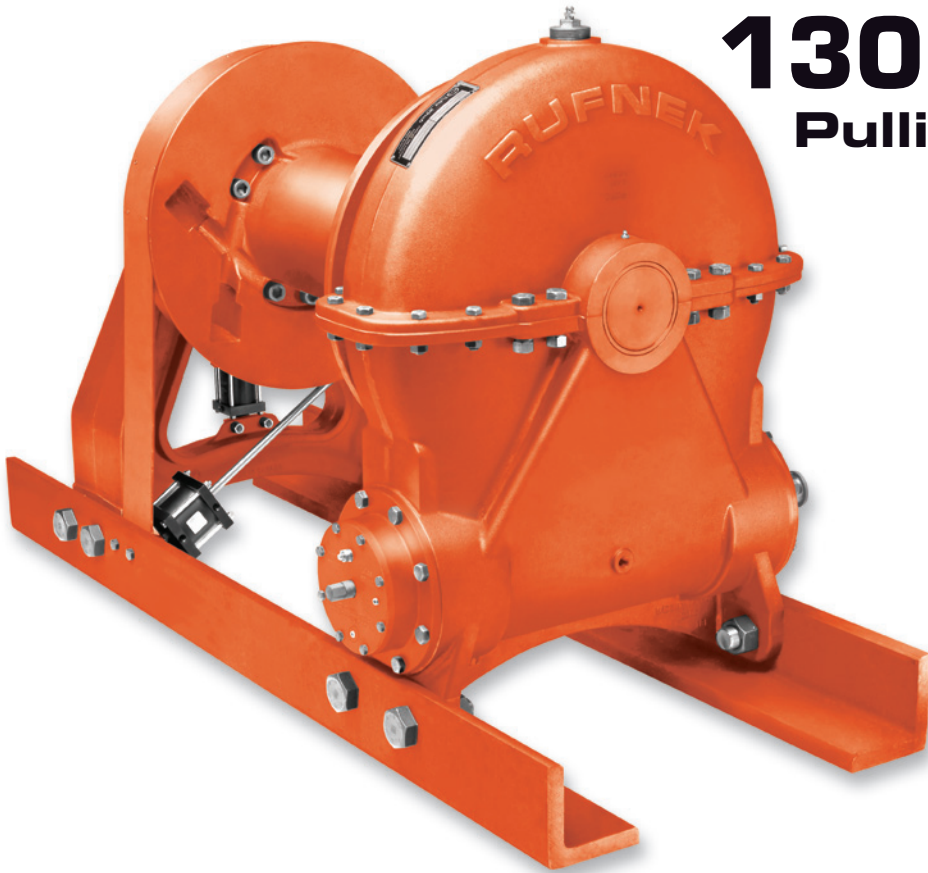
⚠ CAUTION:

The last 5 wraps of cable must be left on the drum to assist the cable clamp in holding the load.

⚠ WARNING:

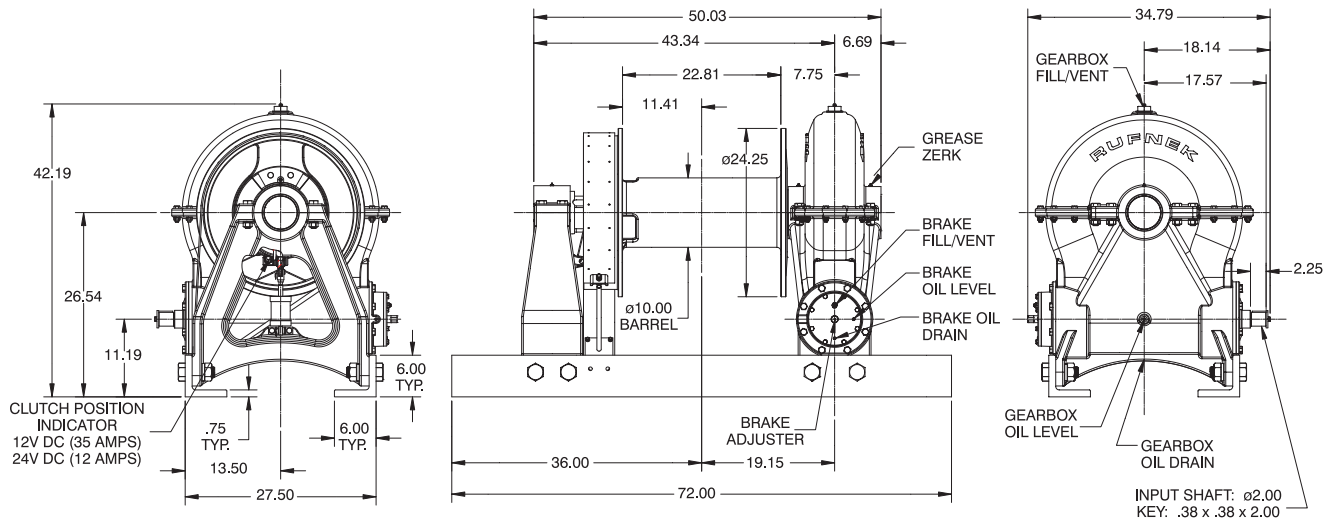
Winches and capstans are not intended to be used for lifting or moving of persons.

130,000 lb. Pulling Capacity



RN130W

RUFNEK® Worm Gear Winches



Approximate weight: 2,500 lb Mechanical

PERFORMANCE DATA						MECHANICAL DRIVE					
Layer	Linepull (lb)	Linepull (kg)	Linespeed (fpm)	Linespeed (mpm)	Cable Cap. - 1.25" ϕ (ft)	Cable Cap. - 1.25" ϕ (m)	Input Torque-Static (lb-in)	Input Torque-Static (Nm)	Input Torque-Dynamic (lb-in)	Input Torque-Dynamic (Nm)	Input Speed (rpm)
1	130,000	58,967	16	5	53	16	25,120	2,838	17,368	1,962	max. 400
2	106,578	48,343	19	6	118	36					
3	90,181	40,905	22	7	194	59					
4	78,158	35,452	26	8	283	86					
5	68,962	31,281	29	9	383	117					

CAUTION:

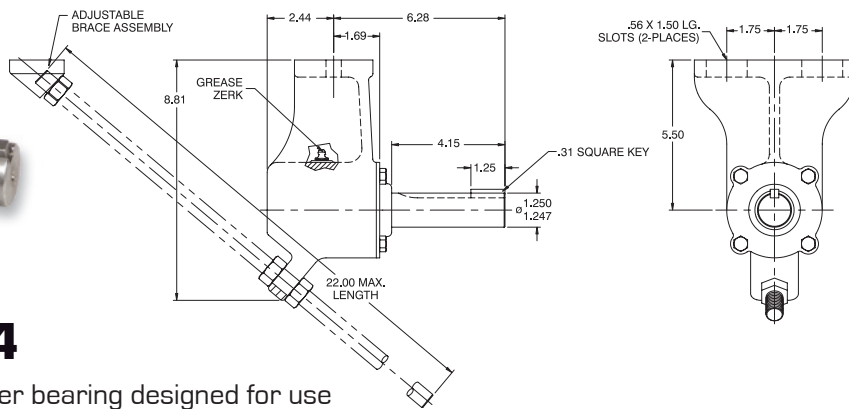
The last 5 wraps of cable must be left on the drum to assist the cable clamp in holding the load.

WARNING:

Winches and capstans are not intended to be used for lifting or moving of persons.

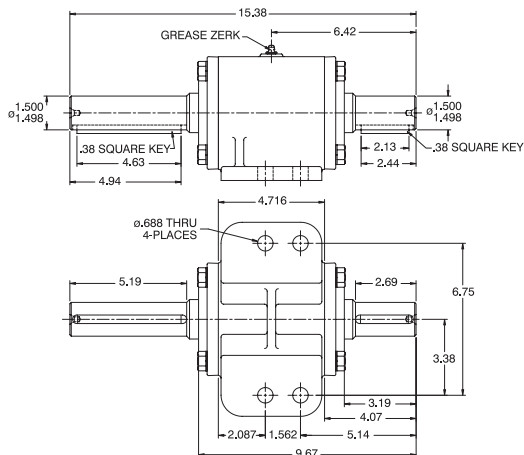
HANGER BEARINGS

Simplifies installation. Factory-certified components.



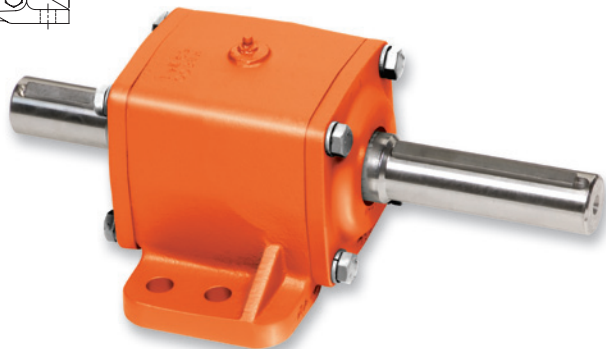
HB544

1-1/4" hanger bearing designed for use on models RN10W through RN30W.



HB800

1-1/2" hanger bearing designed for use on models RN45W through RN130W.



MECHANICAL DRIVE GROUPS



Complete drive group ready to install.

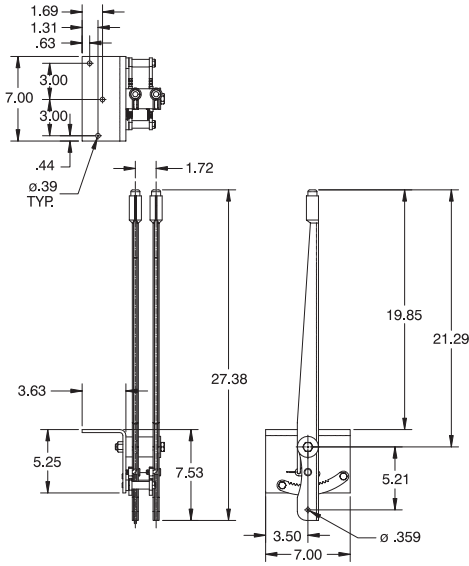
Driveline, hanger bearing, sprockets and chain.

Winch Model	Part #	Weight (approx./lb)	Description
RN10W, RN15W	1246	100	HB-544 hanger bearing, (1) sprocket, 11T, 1-1/4" bore, (1) sprocket, 20T, 1-1/4" bore and 3-3/4' chain
RN20W	1084	100	HB-544 hanger bearing, (1) sprocket, 10T, 1-1/4" bore, (1) sprocket, 18T, 1-1/4" bore and 4-1/2' chain
RN30W	1134	100	HB-544 hanger bearing, (1) sprocket, 10T, 1-1/4" bore, (1) sprocket, 21T, 1-1/4" bore and 5' chain
RN45W, RN65W	4043	210	HB-800 hanger bearing, (1) sprocket, 18T, 1-3/4" bore, (1) sprocket, 12T, 1-1/2" bore and 10' chain
RN45W, RN65W	4044	185	HB-800 hanger bearing, (1) sprocket, 18T, 1-3/4" bore, (1) sprocket, 12T, 1-1/2" bore and 5' chain
RN100W	4045	210	HB-800 hanger bearing, (1) sprocket, 18T, 2" bore, (1) sprocket, 12T, 1-1/2" bore and 10' chain
RN100W, RN130W	4046	185	HB-800 hanger bearing, (1) sprocket, 18T, 2" bore, (1) sprocket, 12T, 1-1/2" bore and 5' chain

DOUBLE LEVER ASSEMBLY

Allows remote mechanical operation of winch with ratchet and pawl lock.

Includes levers, threaded rod, clevis, nuts, washers, cap screws and pins.



AIR CONTROL KITS



Complete system to convert winch to air-shift configuration.

Includes cylinders, tubing, fittings, clutch valve and metering valve for brake band.

Winch Model	Part #	Weight (approx./lb)	Description
RN20W	41618	15	Air shift cylinder, clutch and brake (1)
RN30W	40285	15	Air shift cylinder, clutch and brake (1)
RN45W, RN65W	40246	23	Air shift cylinder, clutch and brake (1)
RN100W	40593	26	Air shift cylinder, clutch and brake (1)

HYDRAULIC DRIVE GROUPS

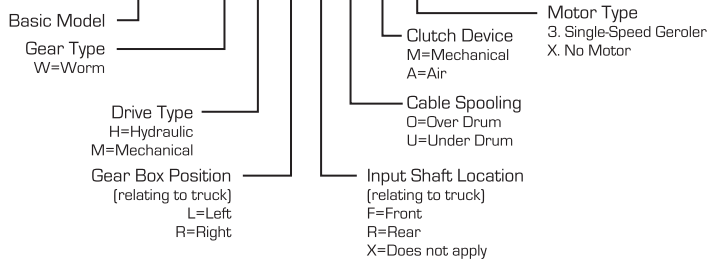


Complete drive group ready to install.

Includes pump, reservoir, filter and control valve.

Winch Model	Part #	Pump Rotation	Description
RN10W, RN15W	4094	Bidirectional	18 gpm system, 15 gallon reservoir
RN20W, RN30W	4096	Bidirectional	30 gpm system, 25 gallon reservoir
RN45W, RN65W, RN100W	4098/4099	RH/LH	60 gpm system, 50 gallon reservoir

Tulsa Winch Model Code
RN100 W H L X O A 3



Contact sales@team-twg.com for other options or assembly configurations.



PO Box 1130 • Jenks OK 74037-1130
 Voice: 918-298-8300
 Fax: 918-298-8367
www.team-twg.com

Have a Question?

To speak with a Tulsa Winch technical representative or to order Tulsa Winch parts, call us at 918.298.8300 or visit our Web site at www.team-twg.com.

Winches in the brochure are optimized for viewing and not shown to scale. All measurements are in inches. All Tulsa Winch® RUFNEK® Winches are designed in accordance with SAE J706. Because of product improvement, we reserve the right to make changes without notice.

© 2010 TWG. All rights reserved.

38022 RN WORM GEAR 10-10