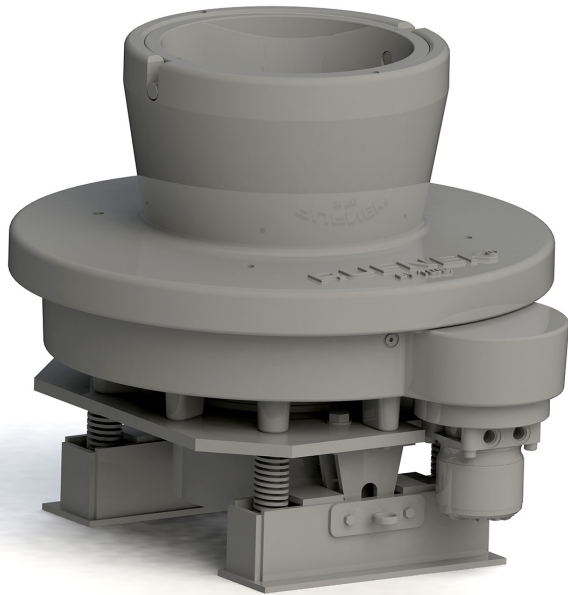


# Rotating Mousehole

Custom designed and provided with quick disconnect hydraulic fittings.  
Sealed from contaminants and tested per IP66.



# Features and Benefits

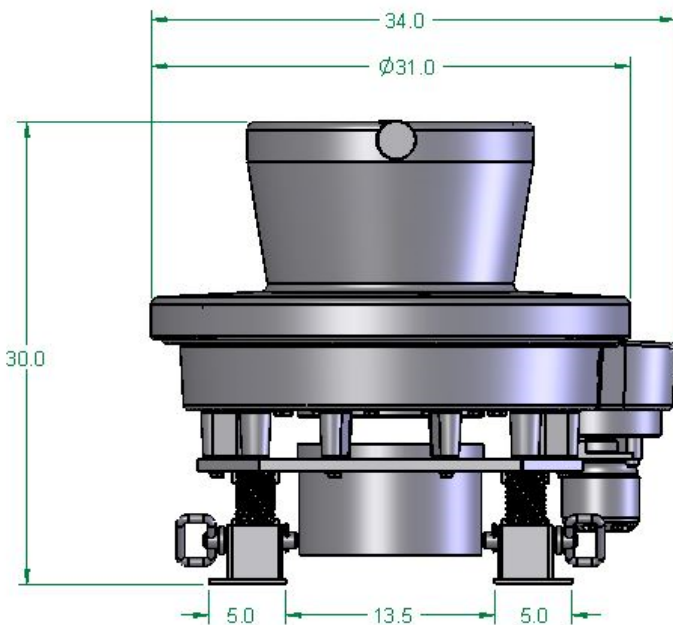


The Rotating Mousehole (RMH) sits on the rig floor to allow the drill pipe to be readily available when needed. The RMH increases the drilling efficiency by enabling users to rotate and join 3 sections of pipe instead of one section at a time.

The RMH is designed to operate while resting in drilling mud, sealed from contaminants and tested in accordance with IP66.

The RMH is designed to be a drop in replacement for any other designs currently in the field.

Quick disconnect hydraulic fittings are standard.



Holes have been added for easier inner bowl removal.

Our RMH design comes with steel springs to absorb shock rather than the typical rubber shock absorbers that break down when used in oil.

Service options include refurbishment, replacement, and 24/7 service support.

Consult factory at time of order for lead time.

Our expert engineers can provide a custom design to meet your needs.

Patent pending

# Specifications

Performance	Part Number: 180-00031-1
Output torque Capacity	1500 ft-lbs (2040 Nm)
Static thrust capacity	50,000 lbs (222 kN)
Bearing axial load capacity	20,000 lbs (88.96 kN)
Speed @ 17 gpm	65 rpm
Dynamic trust capacity	51,200 lbs (226 kN)
Design	Part Number: 180-00031-1
System pressure required	2500 psi (17.2 mPa)
Horsepower	19 hp (14 kW)
Motor style	Hydraulic
Temperature range	-40F to +120F (-40C to +49C)
Pipe size range	2 3/8" to 8 5/8" (60mm to 219mm)
Warranty	2 years
Designed and tested in accordance to IP66	Yes



**dovertwg.com**  
**11135 S. James Avenue**  
**Jenks, OK 74037 USA**  
**918.298.8300**