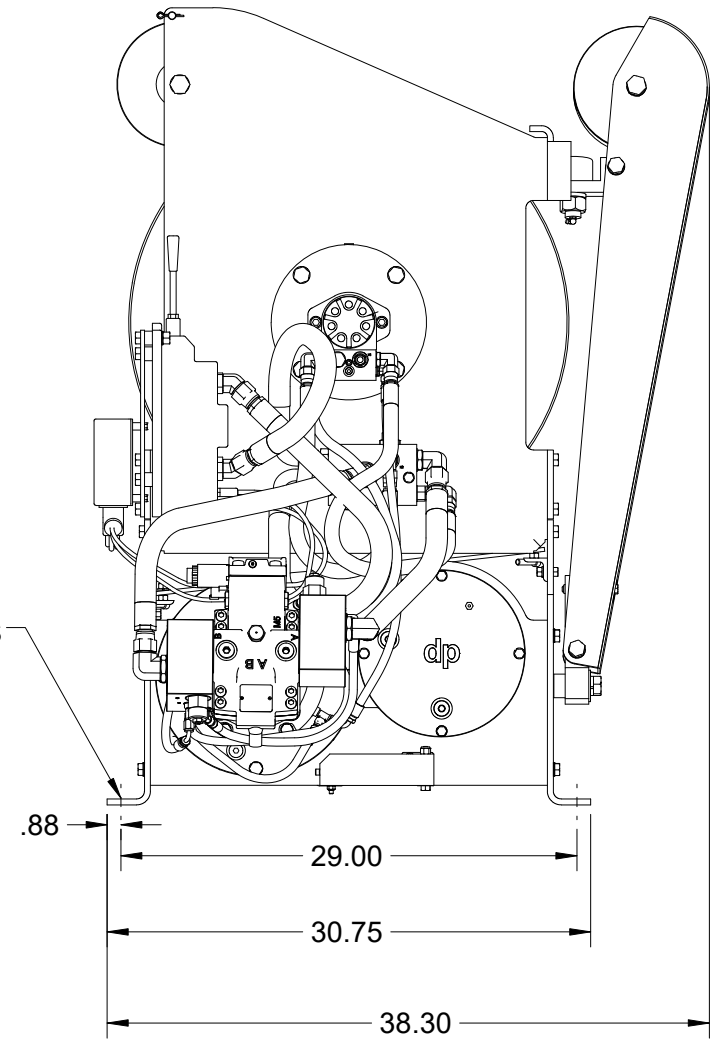
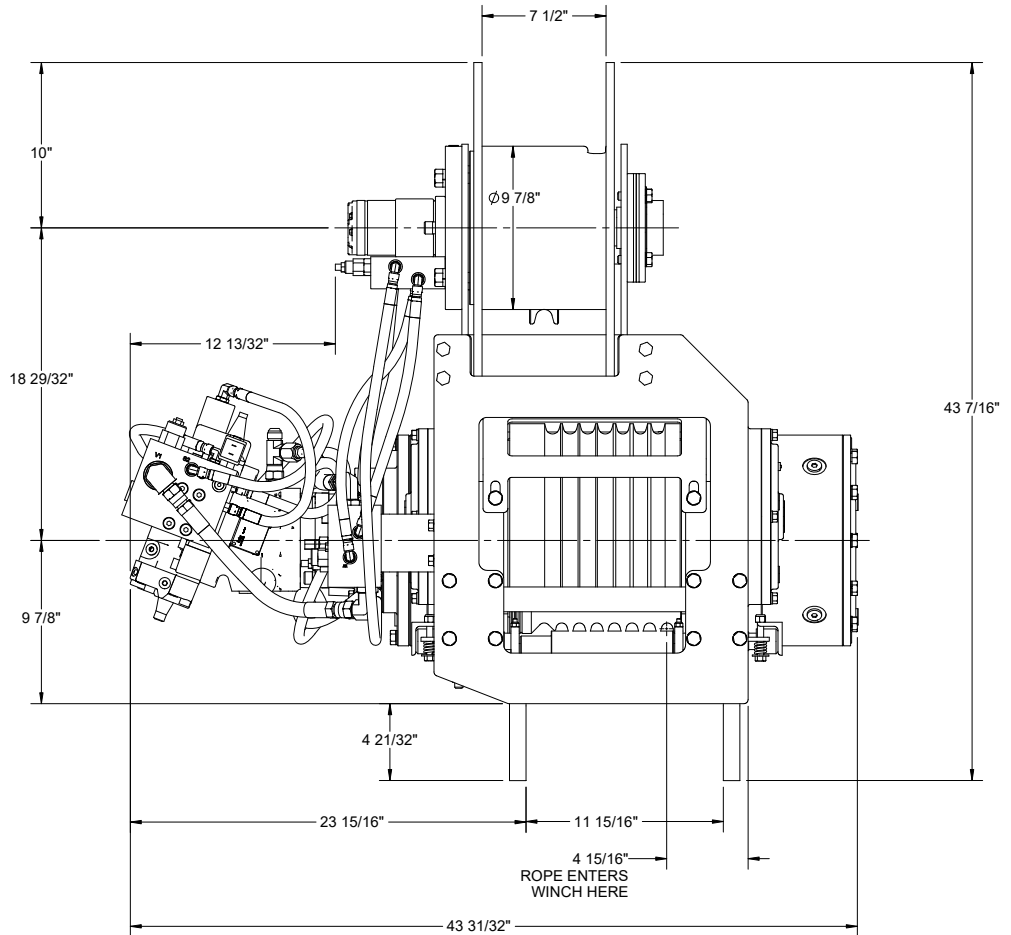
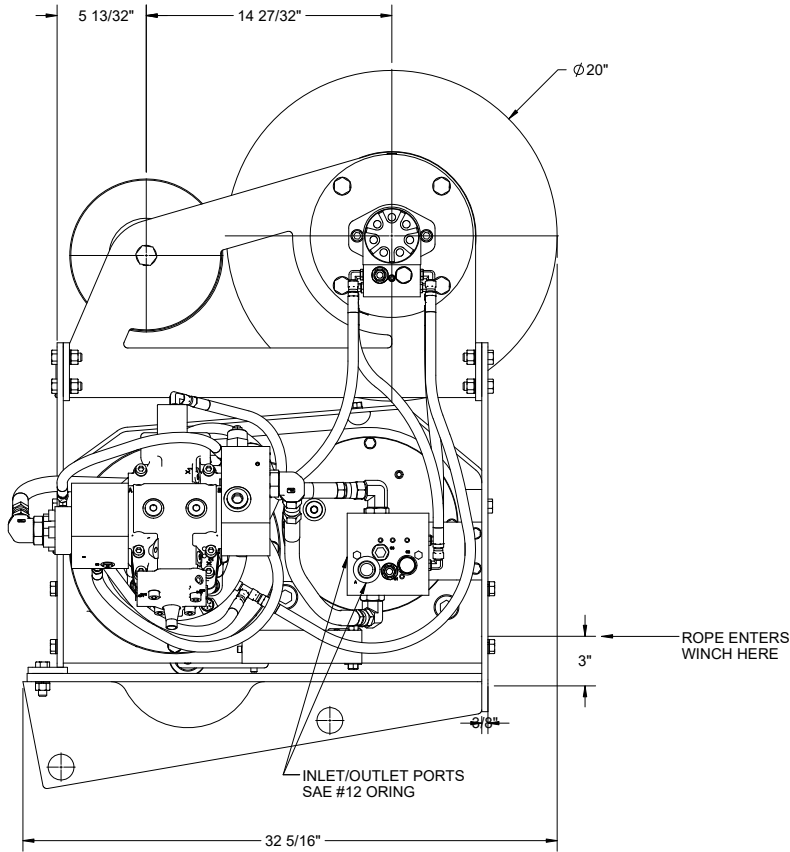


Ø.781 MOUNTING
HOLES (8) PLACES





PERFORMANCE

Drive Unit

Low Speed	High Speed
Line Pull - 35,000 lbs	Line Pull - 7,000 lbs
Line Speed - 20 fpm	Line Speed - 70 fpm

Storage Unit
Wire rope diameter - ϕ 3/4
Capacity - 203 ft

Note: With variable speed motor, speed varies depending on line pull.
Performance is based on 2800 psi across the motor and 15 gpm

①

Approximate Weight: 2,700 lbs